

A very warm welcome to the first edition of 2012. Happy New Year to all our readers from all of us on the Iwade Observer team.

Iwade Observer

Jan - Feb 2012

Nicholls Development Impact on A249 and Iwade

Nicholls Transport are intending to submit a planning application to relocate to the land north of Swale Way between the A249 and the Sheerness trainline. The Parish Council are concerned about the huge impact on the A249 and noise levels in Iwade. View the exhibition information at www.nicholls-uk.co.uk/consultation. If you wish to have your say either contact the parish council at Iwade Parish Council, P.O. Box 588,

Sittingbourne, ME10 9ET or you can contact Nicholls directly at Nicholls Transport, Lydbrook Close, Sittingbourne ME10 1NW, ensuring you copy your letter to Iwade Parish Council and Swale Planning if possible or email Nicholls at paul@paulsharpeassoc.co.uk and also copy in our Parish Clerk at iwadepc@blueyonder.co.uk and Swale Planning at planning@swale.gov.uk. Keep an eye on iwadevillage.co.uk for more information as it comes in.



If you do not want this development to happen, and future developments in Iwade please speak up. These consultations are meant to be so local residents can have their say so please speak out.

THESE CAN BE STOPPED IF IT'S NOT WHAT YOU WANT!

Looking to get fit for 2012? Why not join the Health Walks?



The Iwade arm of Kent Healthwalks meet at Lloyds Pharmacy on a Thursday morning 10.30am for 10.45am start to walk 3 to 4 miles across fields.



Iwade Womens Institute is 80 years old this year so it is time to celebrate this marvellous achievement and to give thanks for the work of past and present Members, Committees and Presidents in keeping our show on the road. Our first meeting of the year is a birthday lunch at Hempstead House Hotel on 18 January when all 30 members and our area adviser Sue Maylem enjoy a 3 course meal followed by birthday cake made and decorated by our President Val Pugh. The lunch replaces the normal monthly meeting in the village hall. Our next meeting will be at 7.30pm on Wednesday 15 February in Iwade village hall. We have speaker Tony Harris this evening. Tony is a pilot and his talk is "Flying for Fun". A few of our members heard Tony speak at a WI speaker auditions day organised by our local Federation Office and thought he was really lively and amusing so we are looking forward to meeting him. We normally have a competition

at these monthly meetings on a subject relative to the talk so for February members are asked to make a paper plane if they want to participate. It'll make a change for mums and grandmothers to ask the children for help with their homework! We also have a 50-50 raffle in February. Members can buy a ticket for £1 and the winner takes half the takings, the WI retaining the other half to put towards their funds. Also in January and February some of our members are taking a trip to McBean's Orchids, specialist orchid growers based near Lewes in West Sussex. The company was founded in 1879 and is one of the most famous names in orchid hybridization and the recipients of countless awards for orchid breeding. We get to walk through hundreds of orchids displayed amongst rocks, waterfalls, pools and tropical foliage. Apparently February is the best time to see orchids at their flowering best. We have

waited almost a year for this and are praying we don't get snow in February to spoil our plans.

Would you like to join us at Iwade WI? How about coming along to one of our meetings to see how you like us. We'll do our best to make you feel welcome. We are all individuals with different interests but we do enjoy getting together to listen to an interesting talk or to enjoy a meal together. Meetings of Iwade WI are held at 7.30pm every third Wednesday of the month, mostly in Iwade Village Hall. For more information about Iwade WI please refer to the village noticeboards, contact Hilary, our Secretary, on 474686 or hilary.foulds@hotmail.co.uk



WI ladies at Mid Kent College for lunch and a show!

Editor's Note

by Tara Kent

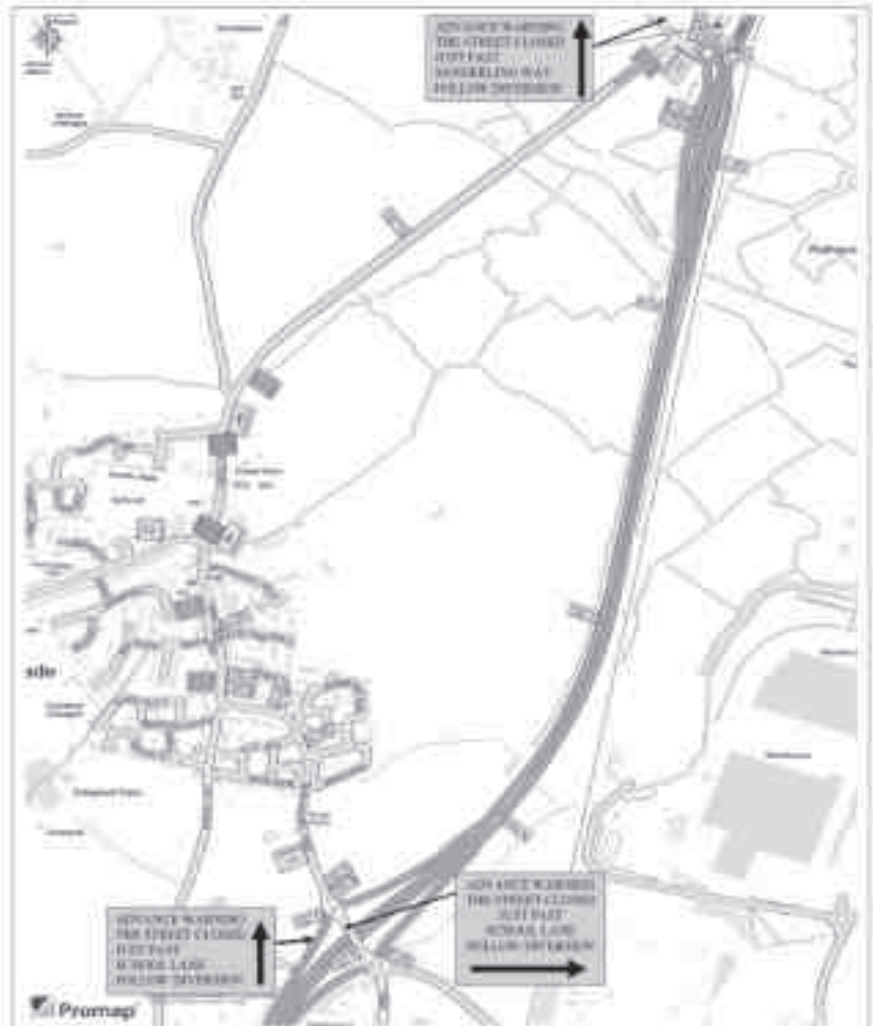
Feels like ages since my last turn at editing I'd almost forgotten what to do! I had to enlist the help of fellow editor James, so thanks James!

I hope you all had a fantastic Christmas and New Year. I didn't make any resolutions this year but I started a project called "Project 365" which is creating a photo album by taking a photo a day (although this year obviously has 366 days!). I'm really enjoying it and although I'm only 16 days in, already it's nice to keep looking back at what I've taken so far. I took this month's cover photo with a retro camera application on my mobile phone. I was so pleased with it I thought I'd share it with you all.

If you've started any new hobbies or have big plans you think others might be interested in why not share it with the rest of Iwade by posting in the Iwade does Facebook page.

Happy New Year!

Don't forget that the Gas Mains Replacement Works in The Street commence on Monday 30th January 2012 and the road will be closed for up to 8 weeks.



Disclaimer

Whilst every care has been taken to ensure accuracy of the information in this newsletter, neither the printer, editor or distribution team can accept responsibility for any subsequent alterations, errors or mistakes in any material published herein. The views expressed in any articles are not necessarily the views of anyone involved in the production of this newsletter.

Dates for the Diary

Mobile Library Thursday 2nd February 11.15am - 11.25am end of Sheerstone
Communion Service Sunday 5th February 10.30am All Saints Church Iwade
Iwade Village Market Sunday 5th February 10am to 1pm Iwade Village Hall
Parish Council Meeting Wednesday 8th February 7.30pm Iwade Village Hall
Family Communion Sunday 12th February 10.30am All Saints Church Iwade
WI Wednesday 15th February 7.30pm Contact Hilary on 474686 for details
Mobile Library Thursday 16th February 11.15am - 11.25am end of Sheerstone
Communion Service Sunday 19th February 10.30am All Saints Church Iwade
Family Service Sunday 22nd February 10.30am All Saints Church Iwade

Message from your County Councillor for Iwade, Mike

It was a very sad start to the New Year with the death of long-serving Councillor Brenda Simpson. Brenda represented neighbouring Kemsley Ward on Swale Borough Council for over twenty years. She will be sorely missed by those of us lucky enough to have known her, and by the thousands of people she helped over the years. Our thoughts are with her family.

Applications for primary school places in September 2012 closed on 14 January. Letters will be sent out on 30 March informing parents which school has been allocated to their child. If you missed the deadline and want your child to start school in September 2012, then please go to Kent.gov.uk for details on late applications or contact me.

There was good news on the closure of the main road for gas repairs. The original date of 3 January simply didn't give

people enough time to prepare for the disruption and the long diversions. Hopefully, the four-week delay to the works will give everyone an opportunity to plan around the closure.

Hopefully, the weather will remain mild and the roads and pavements will be ice-free this winter. Just in case, I have used some Member Grant money to provide the village with 100 25kg bags of salt, and these have been distributed by the Parish Council for use on those areas that gritters cannot get to, and that do not have salt bins. Hopefully, if the ice does come, then these bags of salt will help make the village safer for everyone. Another benefit of the mild weather is that we see fewer pot-holes in our roads. However, there are still plenty to be repaired. If you notice a pothole then please let me know, giving me its exact location, and I'll pass the information on.

If you have a question for Mike then contact him by email at mike.whiting@kent.gov.uk, or by phone on 842631.



The bridge section of the Northern Relief Road, linking Grovehurst Road to the Eurolink Estate has opened at last. This £34m project means that villagers can access the Eurolink and Great East Hall housing in a matter of minutes, rather than fight the congestion along Mill Way and Eurolink Way, particularly during the rush hour. The fight is now on to drive the new road through to the A2 at Bapchild.

Churchwardens notes by Sylvia O'Shea



Before the New Year gets too advanced, I want to wish everyone Health, Happiness and Peace for 2012. I also wish to thank everyone that helped to make the Christmas season extra special for your village church. Happy Days held their Christingle service there, the Scouts/Cubs came for warmth and refreshments following their carol signing in the village, the Crib Service was extremely well supported and 250 enjoyed the Carol Services on Christmas Eve. With these numbers it is understandable why TWO Carol Services are needed. The church can only safely hold 120/130. Bless you all and hope to see you during the year too for services – Family Service is 4th Sunday of every month, where all members of family are welcome. Particularly children. Come and see us one Sunday!

Parish Council Notes

taken from the meeting of Wednesday 9th November 2011

Matters Arising from the Minutes

Clerk advised that she has now received confirmation that the Village Park (both sides of the stream) is now in the ownership of Swale Borough Council; apart from a small slither of land adjoining the bottom of the new cemetery, she has also received confirmation that the old orchard, compensatory habitat and SUDS area will be transferred to Swale and that it is recognised that the Parish Council wants the £15k play area contribution, linked to this development, to be spent on fitness equipment for the village's senior citizens.

Clerk advised that she had chased regarding the yellow lines and received confirmation from Highways that Members of the Joint Transportation Board recommended their implementation at their September meeting, and they will therefore be included in the next Traffic Regulation Order which they hope to be in a position to advertise around the end of January/beginning of February 2012.

Recently and in the past there have been several incidents with loose stone sets around the traffic calming islands in Grovehurst Road and Sheppey Way. The Clerk has reported these on several occasions and following the latest incident has now been informed that the stone sets will be removed and replaced with tarmac.

Mobile Phone Reception – Mobile signal strengths data for Iwade, obtained by the Clerk from the Ofcom website was noted by Members. Cllr. Phillips has arranged for a high level signal check to be carried out. *Action: Cllr. Phillips*

Trees – Following on from last month's meeting, Cllr. Hyde confirmed that he has ascertained the cost of a mature tree would be £125, and that if Members wishes to pursue this (to tie in with the Queen's Diamond Jubilee celebrations) the total overall cost would be £1,500. Cllr. Gregory suggested seeing if local companies will sponsor the trees – Clerk to pursue.

Members were happy for Cllr. Hyde to follow through with this proposal; with a maximum of expenditure £1,500, but also seeking the support of local businesses. It was agreed to place the item back on December's Agenda. *Action: Cllr. Hyde/Clerk*

County Councillor and Borough Councillors

County Cllr. Whiting confirmed that the new bus shelter is on its way. He reported that work has been completed on the Village Hall car park. Funding was given on the understanding that this will be used for parking by parents dropping off their children to school; it will ease the traffic situation in School Lane.

Finance

Village Newsletter – Cllr. Jones has obtained quotations for the printing and Swale Borough Council appears to be the lowest at £275 for 1400 copies. Members agreed that advertising will not continue as it will not be cost effective for the Parish Council. At the present time there will be a shortfall for the December printing of £58.50p; and following that funds totalling £740, if using the current printing company, will be required for printing February and March editions. Proposed by Cllr. Gregory and seconded by Cllr. Harris that the Parish Council assists with the shortfall for December of £58.50p and then funds the printing costs for one year, commencing in February, 2012, to be reviewed again in December, 2012. Cllr. Jones to contact Swale Borough Council to see if the cost of

printing will be reduced if the Parish Council ties into a one year contract with them. *Action: Cllr. Jones*

Request for Donation by 'Lamplighters' (now called 'Kingsquad') – As Cllr. Plumb had declared an interest in this item he withdrew from the room. Proposed by Cllr. Gregory and seconded by Cllr. Harris expenditure of £242.50p agreed under S19 1976LG(MP)A: the Parish Council's power to support recreational activity.

Planning

SW/11/0516 – Outline application for 6 terraced houses and 4 semi-detached houses with access from Ferry Road to parking area and 4 garages – Village Hall, Ferry Road, Iwade – Members commented that this is an enabling development, as the sale of the land with the hoped for outline planning permission will enable the building of new village hall. A survey, seeking villagers' views on the new proposal has been circulated throughout Iwade and most of the arguments have in the main been regarding moving the hall, not to the actual outline planning application. The outcome of this survey can be viewed on the Village Hall's website. The existing Hall has served the village superbly since it was opened in 1957, but with the twenty-fold increase in population it can no longer cope with demand. Members agreed to raise no objection to this application, but would ask that a clause be added that the number of houses on the site must not exceed ten.

To read the notes in full go to the council section at iwadevillage.co.uk

Iwade Herons Match Report

8th January 2012

Iwade Herons u12's v Ditton Minors u12's

5 - 1

After being rocked by their first defeat of the season, Iwade needed to get back to their winning ways to stay on course for promotion and Ditton certainly made them work hard for it. Good ball possession and attacking football was on the agenda for Ditton and Iwade struggled at times to deal with the pressure. Shortly after the kick off, Ditton broke through and fired a shot on goal that beat the keeper and was amazingly cleared off the line by a startled but ever dependable Louis Sargent (that was a dead cert to go in, well done Louis!) More chances fell for Ditton but Iwade was getting close too, several times on the break Iwade got through the Ditton defense and came close to scoring being denied only by the woodwork and a stubborn keeper that wasn't going to be beaten easily. Eventually though, good play down the wing by Kieron Head allowed Jack Andrews to break free, who slotted home ten minutes from time to make it 1-0 at the end of the first half. After a good team talk, the second half started well, Iwade remained in possession and with the wing men Josh Killick and Ryan Hayes working well to bolster the central attack, Captain Jamie Hardy and Jake Phillips lead the way, some great passing found Edd Jenkins that fired a screamer past the Ditton keeper to make it 2-0. Ditton remained focused and soon came back on the attack. An awkward ball that was allowed to bounce around the Iwade area found a Ditton foot that hooked it towards goal, Luke Friend was unable to react as it fell in the net 2-1. Iwade became unsettled and started to lose more possession but a quick counter attack by the midfield got the ball back in the Ditton area and a splendid chip over the keeper by Edd Jenkins eased the Iwade supporters nerves increasing the lead by 3-1. The boys settled down and got back in their winning stride, chances were coming thick and fast. Josh Killick, Ryan Hayes and Jack Coleman all had a go at goal but the Ditton keeper was having none of it and was by far the man to beat, nothing more than a fierce shot was going to get past him. Meanwhile though, the back four was still being put under pressure by continued Ditton counter attacks. George Holborn, Owen Hyatt and Joe Lusted all had to be focused to keep the Ditton no.11 and co out of the Iwade area, I saw a great defensive header by Callum Whitehead, must be something to do with the new haircut! More attacks followed by a now confident Iwade side and it wasn't long before Jack Andrews picked up the ball and had a great shot on goal that went hi over the keepers head and smashed the back of the net (he wasn't going to save that one!) great goal! 4-1. After more good play from the Iwade defense clearing up field, the midfield boys took the game to Ditton to finish them off and got their reward just before time, a fast attack on goal rattled the crossbar and guess who was there to follow it up? ...Jack Andrews made his hatrick, a great goal past a beaten keeper 5-1

Supporters trophy - went to the whole team

Managers trophy - Louis Sargent

Well done boys, can't ask for more than that, but just a small reminder, always look up and try to use your wing men. Great start to the new year!

Sittingbourne Extra

Hopefully you have picked up a copy of the new Sittingbourne News Extra which hit the streets on Wednesday (December 14). It's a purely local paper filled with news, sport, events and much, much more, and all for just 65p. The paper was launched by The KM Group to fill a gap in the market following the closure of the East Kent Gazette. We are interested to hear what our readers have to say about the paper. We are therefore asking for people to send any feedback to sittingbourne@thekmgroup.co.uk. The new paper also has a letters page so if you have something to say why not put pen to paper and write in to us? The address is Sittingbourne News Extra, 44 High Street, Sheerness, Kent ME12 1NL. Alternatively, you can send an email to sittingbourne@thekmgroup.co.uk – the deadline for letters to reach us is noon on Fridays. Please use the same contact details if you have any details of events or stories you would like to pass on to us to be included in the paper.

I look forward to hearing from you.

Hayley Robinson

Chief Reporter

Tinkerbells Early Years by Donna Barker

Tinkerbells would firstly like to wish everybody a happy and healthy new year! We would also like to thank you for your support at the Christmas fayre we hope you all enjoyed it as much as we did. Our nativity went really well and all the children did brilliantly, we were also invited to the school to watch the reception nativity which was very good and we all enjoyed seeing all the children who used to attend the setting. We also had creepy crawl visit the setting who bought in a range of small pets including a..... tarantula which all the children enjoyed, can't say the same for the staff though!



Another successful year for Jack Evans



It's been another successful year in karting for Iwade's Jack Evans. The 11 year old pupil

from Westlands School in Sittingbourne has just competed in the Henry Surtees Commemorative Meeting at Buckmore Park and won by over 5 seconds. The

Commemorative Meeting is held in honour of the late Henry Surtees, son of Former F1 World Champion John Surtees OBE in support of The Headway Charity.

Jack only recently moved up to the Minimax class this year and has had an outstanding year. He has just been crowned the Minimax Summer Champion 2011 at Bayford Meadows with winning an amazing 7 out of the 8 rounds and scoring maximum points and he is currently leading the Buckmore Park Summer Championship 2011.

Jack is determined to let his winning streak continue and he is now looking forward to competing at PF International Kart Circuit in Lincolnshire this year.

Jack would like to thank Project One Racing, Swale Youth Development Fund and the Swale Council for their support during 2011. If there are any companies that would like to sponsor Jack for 2012, please contact his dad Graham on 07971 008 187.



Domestic Heating & Plumbing Engineer

- Boiler Servicing & Repairs
- Heating Installations
- Gas Safety Certification
- Power Flushing
- Domestic Plumbing

Tel: 01795 478877 Mob: 07886943553
Email: info@artygroup.co.uk



- Guttering Repairs
- Guttering Replacements
- Guttering Cleaning
- Fencing
- Garden Clearance
- Shed/Garage Clearance

01795 475294
07738 678567

info@ggs-services.co.uk

ggs-services.co.uk

LOCAL IT COMPANY

- * Laptop, TV, PC Sales at Trade Pricing
- * PC Repairs, Upgrades & Installations
- * Email / Web / Skype setup
- * Software Design

Technicians based in Iwade



0845 373 0321

(Local call cost)

www.hnf.it

KS Builders



Full drawings, planning and building regulations
All building works and trades covered
Inc Extensions, loft conversions kitchen/bathrooms
Sauli - 07920 114759 - 01795 876326
Email - sauli@five.co.uk



5 Alefe Way, Iwade

01795 883212

01795 413020

@ jane@js-salesandlettings.co.uk

Sales & Lettings



KAR SERVICES

IWADE GARAGE

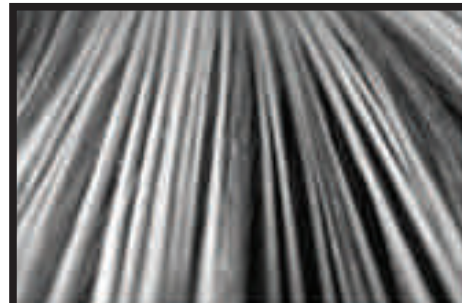
36 FERRY ROAD, IWADE, SITTINGBOURNE, KENT, ME9 8RH

Tel: (01795) 438888 www.karservices.co.uk

SEWERS - GRADES - CUTTERS - TRENCHES - SLOPEWORK
CABLES - WELDS - AIR CONDITIONING - LATEST DIAGNOSTIC EQUIPMENT - AUTOMATIC TRANSDUCERS
TANK WORTH MONITORING - LOCAL RECOVERY SERVICE
M.O.T. TESTING (by Appointment)



CARPENTRY, FLOORING
PLASTERING, PLUMBING
LOFT AND GARAGE CONVERSIONS
KITCHEN & BATHROOM REFITS
GARDEN LANDSCAPING, INCLUDING DECKING
INSURANCE WORK WELCOME
(AFFILIATED TO MEDWAY FAIR TRADER SCHEME)
01634 324422 OR 07980 623103



J.C. HAIR
MOBILE HAIR STYLIST
07788101228
01795 427055
J.C.HAIR@btinternet.com
APPOINTMENTS AVAILABLE ON
THURSDAYS, FRIDAYS
AND SATURDAYS

Window-Tech
HOME IMPROVEMENTS (KENT) LIMITED

WINDOWS FENSA
DOORS
CONSERVATORIES
PORCHES
DOUBLE GLAZING REPAIRS
CARPENTRY WORK
GENERAL HOME IMPROVEMENTS

TELEPHONE GAVIN ON
01795 431015 OR 07725 686 094

24 KINGFISHER CLOSE | IWADE
SITTINGBOURNE ME9 8LY



The Woolpack
17 The Street Iwade ME9 8SH
01795 472656
Restaurant open midday to 9pm
New Chef
New Menu

Body Care
Unisex Hair and Beauty Salon
offering full range of specialised
treatments

OPEN UNTIL 9PM MONDAY TO WEDNESDAY,
8PM
THURSDAY AND 5PM FRIDAY AND SATURDAY
TELEPHONE 01795 474555

**BABY AND TODDLER SWIMMING CLASSES
FROM BIRTH TO 5 YEAR OLD**

CLASSES BY SITTINGBOURNE AND FATHERTEAM NOW
IWADE RESIDENTS 10% OFF FIFTY TERM



Puddle Ducks

1 FLYING DUCK CLOSE
IWADE
01795 474 111
SAFETY@PUDDLEDUCKS.CO.UK