

Alliums in Amanda Hurrell's Garden, Iwade

Iwade Observer

Welcome to our brand new Iwade Observer! Our newsletter has been given a new look and we hope you like it. A big thank you to Matt Bourne, our resident graphic designer for all his help.

July 2010

AmicusHorizon Development by James Hunt

A lot of people have been wondering what is happening to the AmicusHorizon development on Ferry road which seems to have been abandoned. I have been in touch with a representative of AmicusHorizon and they have issued the following statement: "The development work at Ferry Road in Iwade is halfway complete. However, the contractor, Barnfield Construction has gone bankrupt. AmicusHorizon is eager to finish the properties and we are currently selecting a new main contractor to complete the project. We hope to have contractors back on the site in the summer. All



properties are to be completed by the end of the year, and all will be offered for sale on a shared ownership basis. We are very grateful to the surrounding residents for their patience while we complete the works. For further information on this development, please contact us on 0800 121 6060."

Iwade's karting star Jack Evans aged 10 cracks it at National level!

Jack is competing in the National Super Ones Karting Championship, a series which F1 drivers Lewis Hamilton and Jenson Button once raced in and has just won the second round at Rowrah Kart Circuit in Cumbria. This is Jack's first year racing in a National Championship and what a superb start he has made. He is now currently 4th place in the championship. He said "I am extremely proud of myself for

winning at Rowrah as it was only the second time that I had been to that track and I hope there will be many more wins to come". There are six rounds in total in the championship and the remaining four are in Oxfordshire, Scotland, Dorset and Kent. Jack would like to thank Project One, RPM and the Swale Youth Development Fund for their support. If there are any companies that would like to sponsor Jack, please contact his dad Graham on 07971 008 187.

What a pong!

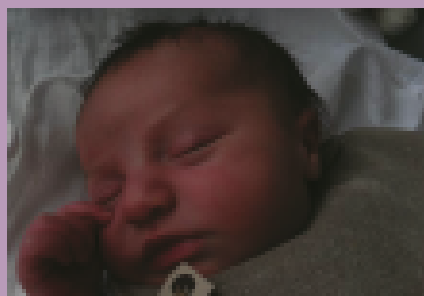
On Monday 17th May Councillor Ben Stokes along with a resident from Iwade and one from Kemsley, paid a visit to Country Style Recycling Plant at Ridham Dock in regard to the strong foul smell we suffer from when the wind blows our way from that direction. They were shown around the plant by the operations manager. The foul smell appears to come from their waste food processing plant. Ben has been assured that a deodorizer plant is to be installed within four weeks which should greatly reduce the smell. He will monitor the situation and find out if the proposed deodorizer plant has been installed.



Editors Note

by Tara Kent

Welcome to the very first edition of the Iwade Observer. We've made some changes to our design and layout and as from this month we will only be publishing our useful contact details once a year so be sure to cut out and keep the back page of this edition. This will give us more room each month for your articles and photos, don't worry if you lose it though as all the contact details are available at iwadevillage.co.uk. If you have some news to share or want to tell us what you think of our new publication please drop us a line at newsletter@iwadevillage.co.uk. We are also welcoming another new arrival here at the editorial team, we'd like to say a big congratulations to our editor James and his wife Gemma on the arrival of their new baby son Thomas who was born on 8th June. As I'm sure you'll agree he is very cute and we wish them the best of luck!



Farmers Market

by Amanda Hurrell

Iwade Farmers Market was launched 18 months ago and has been a valuable service to local residents and surrounding villages. Farm Manager, Sasha Carrington-Dawkins, has recently stepped down due to family commitments and Iwade Village Hall Committee members have stepped in to keep the market running with the help of Dave Manning our local caterer. The committee would like to thank Sasha for her work in keeping the event running each month and for her valuable work as a committee member. The next market will be

held on Sunday 4 July 10am - 2pm. We hope to bring you new stall holders including a local wood turner, fresh fruit & veg and Mr Whippy ice cream and face painting for the kids! Each month a guest stall will be announced which could be seasonal fruit or veg or a local service/craft. We aim to keep the farmers market to a ratio of 10% services/crafts to local food. A big thank you to residents for continuing to support this event and we look forward to seeing you on the 4th July 2010.

BT have been spoken to regarding the telephone box in Ferry Road. An engineer came and took away the broken door on May 25th but sadly they will not replace it. They do not have funds to keep repairing the phone box and do not have funds to take it away either. So thanks to vandals we now have an unsightly phone box with no door in our village!

Disclaimer

Whilst every care has been taken to ensure accuracy of the information in this newsletter, neither the printer, editor or distribution team can accept responsibility for any subsequent alterations, errors or mistakes in any material published herein. The views expressed in any articles are not necessarily the views of anyone involved in the production of this newsletter.

School Parking Update

According to Mike Whiting one of our Kent County Councillors for Iwade, Kent Highways are hoping to implement the redesign of the School Lane and Ferry Road junction we were consulted on last year in the Summer Holidays and

move the yellow zig zag lines outside the school to the School Office entrance. This will help to improve safety for the children outside the school both in the mornings and afternoons when it is particularly busy.



Domestic Heating & Plumbing Engineer

- Boiler Servicing & Repairs
- Heating Installations
- Gas Safety Certification
- Power Flushing
- Domestic Plumbing

Tel: 01795 479877 Mob: 07836345653
Email: info@artygroup.co.uk



Unisex Hair and Beauty Salon
offering full range of specialised
treatments

OPEN UNTIL 9PM MONDAY TO WEDNESDAY,
8PM
THURSDAY AND 5PM FRIDAY AND SATURDAY
TELEPHONE 01795 474555

Dates for the Diary

- Summer Band Concert Saturday 3rd July 7pm All Saint's Church Iwade. Call Sylvia on 478103 for advance tickets or just pop along.
- Iwade Farmer's Market Sunday 4th July 10am to 2pm Iwade Village Hall
- Communion Service Sunday 4th July 11am All Saint's Church Iwade
- Mobile Library Thursday 8th July 10.40am to 10.55 end of Sheerstone (Springvale end)
- Gardening Club Thursday 8th July 7.30pm contact Ann Menzies on 599755 for Summer venue
- Gordon Henderson MP Surgery Friday 9th July Top Floor, Unit 10, Periwinkle Court, Church Street, Milton Regis, Sittingbourne ME12 JZ Telephone 423199 to book an appointment.
- Church Open Day Saturday 10th July 10am to 2pm All Saint's Church Iwade
- Joint 6 Church Service Sunday 11th July 10.30am Newington Church
- Parish Council Meeting Wednesday 14th July 7.30pm Iwade Village Hall
- Communion Service Sunday 18th July 11am All Saint's Church Iwade
- Special Sung Evensong with Kent Chorale Wednesday 21st July 7.30pm All Saint's Church Iwade
- Mobile Library Thursday 22nd July 10.40am to 10.55 end of Sheerstone (Springvale end)
- Family Service Sunday 25th July 10.30am All Saint's Church Iwade
- Iwade Farmer's Market Sunday 1st August 10am to 2pm Iwade Village Hall
- Communion Service Sunday 1st August 11am All Saint's Church Iwade
- Mobile Library Thursday 5th August 10.40am to 10.55 end of Sheerstone (Springvale end)

Sittingbourne Speedway

Sittingbourne Speedway Ltd (formerly Iwade Speedway) are pleased to advise that its preparations for its 40th year anniversary meeting are gathering momentum with lots of interest being shown. Plenty of old riders have agreed to take part and some interesting vintage and old bikes are set to take to the track again.

The date of the meeting is Sunday 12th September 2010 and any Iwade residents wishing to come along will be most welcome. On a more recent note the Club has accepted an invitation to have a stand in the Chequers Centre in Maidstone for the week running from 28th June to the 4th July 2010 and if there are any residents who would like to find out

more about the track and the Club please stop by for a chat. There will be some bikes on display and plenty of handouts to give away giving details of the Clubs activities. For more information on the speedway please check out www.sittingbourne-speedway.co.uk or call 07875 849551

46 Sanderling Way On TV Soon!

46 Sanderling Way Iwade will soon be featured on To Buy or Not To Buy as it was recently filmed for the programme. Town and Village Homes in Iwade Village Centre are currently marketing this property. Keep your eye on iwadevillage.co.uk for an air date.



If you want affordable high quality meat or poultry then contact **Mighty Meaty** (based in Iwade) at sales@mightymeaty.co.uk or on 07931 923308. Your meat will be sourced personally from market. log onto mightymeaty.co.uk for more details.



Elham Fudge and Hospitality Catering Granny Mannings Hand Made Pies & Tarts

Delicious Hand-Made Kentish Fudge made in the Heart of the Kent Countryside
Hot and Cold Food for any Occasion,
Inside and Outside, Individually Tailored Menus,
Bar-B-Q, Event Catering, Shows, Weddings,
Birthdays, Corporate Catering,
Hand Made Pies and Tarts

Contact
Granny Mannings
on
01795 421884
28 Oldsons
Iwade
Sittingbourne
Kent
ME9 8BA



The Farm Shop at Featherbed Farmyard

Fresh produce and free range eggs.
Animals, children's play area and picnic area.
Open Monday to Saturday 9 to 4 and
Sunday 9 to 4.
Find us at Featherbed Lane,
Iwade, Sittingbourne, ME9 8BA,
01795 478210

PCSO

Hello, I am PCSO Melanie Platt and I have been your local officer in Iwade for around 9 months now, and I am really getting to know many of you. Over the last couple of months I have been working on priorities raised by you as residents including dog fouling throughout the village. I have been in touch with the Swale Borough Council dog warden, Tim Oxley, who has been made aware of the situation and will be monitoring it as well as myself. What I like about Iwade is the great community spirit, which I now feel a part of. Many of you tend to say hello to me in passing and some of you even stop and have a chat. If you would like to discuss any concerns you may have - or even just want to invite me round for a cup of tea! - please don't hesitate to call me on 0777 222 6183.



Churchwardens Notes by Sylvia O'Shea

It is looking as if July will be a busy and memorable month for Iwade Church members. On Saturday 3rd July we welcome back the U.K. PAPER CONCERT BAND for the annual Summer Concert. This takes place in the church grounds and you are invited to bring a seat or rug to sit upon. Starts 7pm and tickets are £5 which includes refreshments. Be sure to book early although there will be some available on the night (should you change your mind). On Sunday 4th July at Upchurch Church, Rev. Hugh Nelson is being ordained Curate at 2.30pm. It was just a year ago that he was ordained Deacon and with his wife and young family has been living in Newington Vicarage and become a hard working, valued member of the team. Wednesday July 21st we have a special 'treat', when the KENT CHORALE visit Iwade to sing Evensong at 7.30pm. This is a rare treat and one not to be missed. Light refreshments will be served with tea/coffee after the service. Do join us for this special event. Following his return from America, Rev. Ron Partridge has been appointed FOCAL MINISTER for Iwade. This means that he will be your first point of contact for Weddings, Baptisms etc. His home

number is 01795 842007, email is revdron.partridge@virgin.net. He already has a number of Baptisms during the Summer months and will be leading some of the services. Say 'Hello' when you see him. The Church is also host to a number of weddings this Summer, one of which is that of Trevor - our organist to Gillian in July. We wish them both all happiness in their future together. The Church continues to be open every second Saturday of the month, but we will no longer be holding coffee mornings for the visit of Good News Van. The local team is being disbanded due in part to a lack of support and part that the current team feel they are not able to carry on. This is a pity as it has been a great way to introduce those wishing to learn more about Our Lord to material available, whether it is books, talks, music. Stephen and Dawn Plumb are now resident in the village. Please make them welcome. Do PLEASE pop along to the Church when it is open and say Hello. We always have the kettle hot and ready - July 10th and August 14th 10am - 2pm next dates. See you sometime.

Village helpers!

If you need someone to pet sit or dog walk why not contact one of our village teenagers who are both keen to start earning some money. Oliver also does babysitting and gardening.

Oliver Northover - 07519 806899 or o_northover@hotmail.com
Chantelle Ox - horsesiloveforever@hotmail.co.uk



01795 475294
07738 678567
info@ggs-services.co.uk

- Guttering Repairs
 - Guttering Replacements
 - Guttering Cleaning
 - Fencing
 - Garden Clearance
 - Shed/Garage Clearance
- ggs-services.co.uk

Heaven
Hair and Beauty Salon
Telephone
01795 435958
to make an appointment
or just pop in
All hair and beauty treatments available
36 Ferry Road Iwade ME9 8RH

July in the Garden

by Ann Menzies

By now your garden should be looking glorious, most of the planting done, and the weeds under control. All you need to do is sit back and enjoy. Well that's what the experts would have us believe. It never seems to work out that way in my garden. Every time I go out, there seems to be something to do. It's worth nipping out any small weeds when you first notice them, before they get their roots down and established, stealing the water and nutrients from your plants. In the fruit garden strawberries may well be almost finished if your variety is an early cropper. It might be worth looking into other varieties so you can extend the season well into August, and sometimes beyond. If your plants start sending out runner, remove them unless you

need more plants. Otherwise the mother plants will be weakened and have less energy to put into cropping next year. The experts reckon you should only keep plants for 3 years, so it would be worth working on a rotation basis to ensure you always renew your plants to get the best yields. Summer fruiting raspberries should also be ripening, with new canes sprouting up all over the place. Move what you can into the right place, and grub out those you don't want, otherwise you will be overrun with raspberries like weeds. I have kept a few which have sprouted near my water butts to provide some camouflage, I could never have planted them there, the soil is too hard! I've been keeping salad leaves planted in succession, they go to seed quickly in the warmer weather, but are easily planted in small quantities,

taking about 4 weeks to cropping. If you have tomatoes, either outside or in the greenhouse, don't forget to keep them well watered and fed. Irregular watering can cause blossom end rot in tomatoes, the end of the fruit turns black. This does happen with other plants such as peppers as well, the fruits will not recover, but once watering is resumed any further ones will be fine. The main thing is, whatever the weather and whatever you are growing, enjoy the summer days and let's hope for a bumper harvest and loads of glorious flowers after such a cold long winter. The Gardening Club meets every 2nd Thursday of the month at 7.30pm – call me on 01795 599755 if you would like to join us as the venue varies in the Summer months.

Iwade Health Walks Group

Take a look at these recent photographs from the Iwade Health Walks Group. These were taken on 10th June on one of their regular paths out to the Silos and Bedlams Bottom. They were joined by Lynda and Tony Macgowan who came up from their new home in Birchington. If you're interested in joining them on their next walk please contact Jan Morris on 01795 471173 for more details.



LOCAL IT COMPANY

- Laptop, TV, PC Sales at Trade Pricing
- PC Repairs, Upgrades & Installations
- Email / Web / Skype setup
- Software Design

Technicians based in Iwade

HNF
CONSULTANCY

01795 432 732

www.hnf.it

IWADE GARAGE
Servicing & Repair

For used car sales visit
www.lambrooks.co.uk

Finance arranged
Part or full term

Call 01795 460760

We Buy Cars For Cash

Telephone 01795 438 088

MOT
Repairs
Servicing
Diagnostics
Exhausts
Brakes
Batteries

Parish Council Annual Meeting by Amanda Hurrell

The annual Parish Meeting was held on Wednesday, 26 May 2010 in the village hall. Chairman Cllr David Manning welcomed residents to the meeting and discussed the year's events. This was followed by a presentation made by Scouts, Cubs and Beavers leader Jo Richards and then a presentation by our PCSO Melanie Platt. 1st Iwade Scouts leader, Jo Richards, gave a presentation covering all aspects of the Scouts/Cubs/Beavers activities including cooking, crafts, trip to Boulogne, camping and camp fires. Jo thanked Iwade Parish Council on behalf of all the groups for their annual donation, which without they could not exist. They have the biggest group of volunteers in the area and the groups continue to grow each year. There are always spaces available for local children. Adult helpers are always needed to cover the child/adult ratio, so if

you are interested in helping out then why not contact Jo. The children who took part in the presentation included Jacob Saussus, Jessica Saussus, James Fountain and India Courtman. Their involvement in the evening helped towards earning their community badges and by appearing in the local newspaper their media badges. The children are encouraged to get involved in the community and complete a range of activities including the village clean up and regular litter picking throughout the year. Residents and Cllrs were offered homemade cakes and cups of tea by the Scouts group, cakes were made by the Cubs and Beavers. The groups have been running in Iwade for eight years and the groups have a combined total of over 60 children who regularly attend. Most of the children have continued to move between Cubs, Beavers and Scouts in this time. The Parish Council would like to thank Jo Richards and Lisa

Veness and the children who took part in the evening for making this a welcome change from previous annual parish meetings. PCSO Melanie Platt discussed local issues and thanked Cllrs and residents for their assistance over the past year. She continues to tackle local issues including parking, speeding, anti social behaviour and litter issues. Any of these issues can be discussed with PCSO Platt at future surgeries or by contacting her directly via email and telephone.



Planning Notices - from the Parish Council meeting on 12th May

SW/09/894 – Biomax Power Plant, Ridham Dock, Iwade – KCC Planning Committee – Members noted that permission has been granted by K.C.C. Proposed development of a sustainable energy plant to serve Kemsley Paper Mill - planning application reference SW/10/TEMP/0016: St. Regis Paper Company Limited and EON Energy from Waste U.K. Limited. – Members agreed to object on the following grounds:

- The applicant states that the source of the waste has yet to be determined.
- The proximity principle, the Best Practical Environmental Option (BEPO) has not been clearly demonstrated.
- The mass burning of municipal waste does not meet the standards for recycling required by the Governments waste strategy 2006.
- The cumulative traffic effect of other recent planning permissions on J5 of the M2 and Grovehurst

- Road junction with the A249.
- The cumulative effect of several incinerator emissions on Ridham Road and Barge Way on the local population and on the Swale SSSI Ramsar Site.
 - There has been no survey to establish whether great crested newts are present on the site.

Minutes of the Annual Parish Council Meeting can be found at iwadevillage.co.uk


PROPERTY MAINTENANCE
SOLUTIONS LTD

CARPENTRY, FLOORING
PLASTERING, PLUMBING
LOFT AND GARAGE CONVERSIONS
KITCHEN & BATHROOM REPAIRS
GARDEN LANDSCAPING, INCLUDING DECKING
INSURANCE WORK WELCOME
(AFFILIATED TO MEDWAY FAIR TRADER SCHEME)
01634 324422 OR 07980 623103

Sittingbourne Speedway

*Practice Sessions *Amateur Meetings
*Speedway Experience Days *Beginners Training
*Kids' Training Sessions *Fun Days / Social Events

Enquiry Line : 01843 442821
email : bookings@stb-speedway.co.uk
www.sittingbourne-speedway.co.uk

TRACK LOCATION
The Old Gun Site,
Rushmore Hill Lane, Trade 100s 85N
(Easy access via the
Lower Watermill cut by the
Shopping Bridge on the A149)

Parish Council Notes

Taken from the meeting held on
Wednesday 12th May 2010

Election of Chairman, and upon election signing of Acceptance of Office -

Nominated by Cllr. Wilks and seconded by Cllr. Gregory, Cllr. David Manning was elected as Chairman and duly signed the Acceptance of Office.

Election of the Vice-Chairman and upon election signing of Acceptance of Office -

In her absence, Cllr. Manning proposed the election of Cllr. Hurrell as Vice-Chairman – agreed, but Acceptance of Office will need to be signed at next meeting.

Election of Members of Committees -

As all Councillors were not in attendance, it was agreed to carry this item forward to the next monthly meeting.

Visitors/Public Time -

Parishioners – residents asked whether there will be a cricket pitch on School Lane Playing Field. The Chairman responded that it is hoped that this will become a facility, but not for a few years yet. He suggested putting a strip in-between the two football pitches for the summer months.

County Councillors and Borough Councillor –

Borough Councillor Ben Stokes has visited Knauff regarding the dust problem. School Lane Patrol Person has been given the go ahead. He has also spoken to Swale

spoken to Swale Borough Council regarding the fly tipping in the parish.

Cllr. Willicombe reported that he has e-mailed Cllr. Wilks regarding the Biomass Burner and the residue ash; emissions from this facility will be checked by the Environment Agency. Highways are looking at the two roundabouts on the A249. He suggested that the Parish Council write to K.C.C. Highways to make our views known.

Finance - Insurance – Members agreed to accept the quote for the renewal of the policy with AON, in the sum of £1235.63p. Clerk instructed to ensure the land owned by the Parish Council – the garden area to the side of the Village Hall – is covered by the insurance policy and to request R.O.S.P.A. to undertake a risk assessment on this piece of land; the cost for this 'Out of Sequence' report would be £198 + vat and £5 for the Risk assessment.

Whilst discussing the Village Hall, the Clerk was instructed to write to Land Registry to ensure that the deeds to the Hall record that the Parish Council is holding the land in trust for the charity, with the details of the charity included on the registration.

Handyman – Members agreed to increase the Handyman's hourly rate to £10 and his hours by an additional 3 per month to carry out risk assessments and the necessary paperwork.

Youth Group – Mr. and Mrs. Galvin are seeking to form a youth group in the village, for children/teens in the age range 11 to 16 and asked the Parish Council for assistance with the start-up costs and hire of the hall – the sum requested was £1197. Members agreed the donation of £1197 – payment to be made upon receipt of invoices – expenditure agreed under S19 1976LG(MP)A: the Parish Council's power to support recreational activity.

School Lane Playing Field -

The Chairman referred to the meeting he and the Clerk attended with the Chief Executive and officers of Swale Borough Council. The Borough Council, as owners of the Pavilion and playing field, are open to the Parish Council managing these facilities on their behalf and are prepared to negotiate on a mutually agreeable way forward. The Parish Council has since received notification from Swale that K.C.C. (as part of the Section 106 Agreement) wish to use the Pavilion for 2 days and 1 evening during the week, at no cost to them.

The next monthly meeting will be on Wednesday 14th July 2010, commencing at 7.30 p.m.

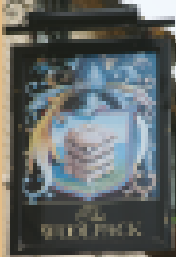
Window-Tech
HOME IMPROVEMENTS LIMITED

WINDOWS
DOORS
CONSERVATORIES
PORCHES
DOUBLE GLAZING REPAIRS
CARPENTRY WORK
GENERAL HOME IMPROVEMENTS

FENSA

TELEPHONE GAVIN ON
01795 431615 OR 01725 886094

24 HOUR SERVICE | FREE
ESTIMATIONS AND QUOTES



The Woolpack
17 The Street Swale ME9 8SH
01795 472656
Restaurant open midday to 9pm
New Chef
New Menu

Useful Contact Details

Council

Swale Borough Council - 01795 417850 csc@swale.gov.uk

Kent Highways - 0845 8247800

Parish Council Parish Clerk - Lynda Fisher 477015 Mon - Sat before 8pm iwadepc@blueyonder.co.uk

Village Hall Chairman Dave Manning & Vice Chairman Derek White

Village Hall Hire call Sue on 01795 475967 (iwadevillagehall.co.uk)

Crime

Crime Reporting line (manned 24hrs) 01795 477055 • PCSO Melanie Platt 07772 226183

melanie.platt@kent.pnn.police.uk • PC Jamie Spencer 07772 221232

jamie.spencer@kent.pnn.police.uk

- Sergeant Daniel Worthington 01795 419120 daniel.worthington@kent.pnn.police.uk • Kent Community Warden (temporary cover) 07872 378 220 • Neighbourhood Watch 01795 419211 • Crime Stoppers 0800 555 111 • Anti-Social Behaviour Team 01795 417575 • Fly Tipping/Graffiti/noise nuisance / Dog control and Abandoned Vehicles 01795 417850

Church

Revd Canon Alan Amos, Priest-in-charge - 01795 842913 • Revd Ron Partridge, Focal minister - 01795 842007 revdron.partridge@virgin.net • Mrs Sylvia O'Shea, Churchwarden - 01795 478103 • Mrs Maria

Wilkinson, Churchwarden - 01795 477133 • Rev David Webb, retired - 01795 424502

wynndavidwebb@blueyonder.co.uk • Captain Stephen Plumb, Church Army Missioner - 07905 040119
captainplumby@btinternet.com

News

Newsletter - Nicola McKenzie newsletter@iwadevillage.co.uk 01795 439892 • Tara Kent -

tarakent@sky.com • James Hunt - jc_hunt@sky.com • Distribution - Janet Gregory

janetgregory117@btinternet.com

iwadevillage.co.uk - Nicola McKenzie nicola@iwadevillage.co.uk 01795 439892

News Correspondent for local press - Amanda Hurrell 07866 413207 thehurrells@fsmail.net

Organisation Contacts

Iwade School - 01795 472578 • Iwade Health Centre - 01795 413100 • Bodycare - 01795 474555 •

Budgens - 01795 421854 • Happy Days - 01795 424348 • Heaven - 01795 435958 • Ickle Pickles - 01795

474551 • Iwade Garage - 01795 438988 • Lloyds Pharmacy - 01795 439368 • Town & Village Homes -

01795 422776 • Woolpack - 01795 472656 • Tinkerbells - 07818 833 435

Clubs

Cubs and Beavers - Village Hall Mondays 6.15 to 8.30 • Darts - TuesWed and Thurs male and female

Woolpack • Fishing Club - Gordon Dickson 07889 155 315 • Gardening Club - Ann Menzies 01795

599755 • Health Walks - Jan 01795 471173 • Herons Football Club - Debbie 01795 439711 • Junior

Tygers - 07810 204 739 • Lamplighters - Wynn Webb 01795 424502 • Model Flying Club - 01795 877918

• Musical Theatre Club - 07590 375 204 • Nyumon Karate Do - 07709 632 879 • Parent and Toddler -

Tuesday 9 to 11 Village Hall • Scouts - Thursdays 7.15pm Village Hall skip@1stIwadeScouts.org.uk

01795 431968 • Weightwatchers - Tuesdays 6.45 to 8.15 Iwade School • W.I.- Hilary Foulds 01795

474686

All useful contact details are also listed at www.iwadevillage.co.uk