

Iwade Village Newsletter

January/February 2010



New Junction

According to Daniel McLeish Kent Highways, the School Lane/Ferry Road Junction redesign project was reported to the Swale Joint Transportation Board just before Christmas and approval was given to progress Scheme 1. Scheme 1 was to give priority to traffic travelling along Ferry Road and The Street with School Lane as a side junction (just like the old days!). This scheme has passed a Highway Safety Audit and has been handed to the Countywide Improvements team to undertake detailed design.

Your NHS ambulance service and how you can help! *by Izzy Allen*

Your local ambulance service - South East Coast Ambulance Service NHS Trust (SECAMB) - is aiming to become an NHS Foundation Trust in 2010. Foundation trusts (FTs) have been around since 2004, although ambulance trusts were only able to start to apply for foundation trust status from 2009 and the authorisation process takes at least a year! FTs are still NHS organisations, providing free care and treatment to patients. They have to meet national targets and are regularly inspected. The main difference is that foundation trusts are run locally and are accountable to patients, local people and staff rather than to Government, by way of the 'membership' they establish. As an FT we'll be able to respond to people's needs more immediately because we'll be working with them as members. We will also have

more say on how and what we invest our money in, training, new ambulances, adopting the latest clinical technologies and techniques, etc. This means public, patients and staff will get the ambulance service they want and need. Becoming a member of our NHS Trust is simple, free and it'll mean you're supporting us as well as having your say about how we can make our services even better. Membership doesn't need to take up your time, you can receive our free quarterly newsletter, with details of the latest developments in life-saving treatments and technology, useful tips, public health info but it also gives you the chance to get more involved if you want. Please join today or visit our website for more info and where you can join online: www.secamb.nhs.uk or contact Izzy Allen - 01273 897840 or ftmembership@secamb.nhs.uk.

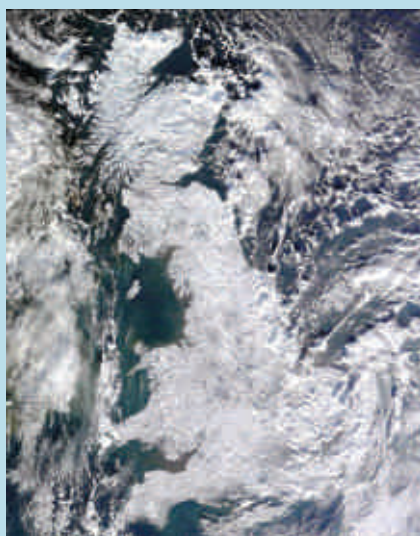
Walking In Iwade will continue on Thursdays at 10.30am meeting at the village centre by Lloyds Pharmacy. They will be on the public footpaths around the village and it is advisable to wear sensible shoes. Newcomers are welcome - after 4 walks you will receive a walking bag, after 8 walks a water bottle and after 12 walks a pedometer. The new contact is Jan Morris on 471173. Why not have a go and get fit after all the Christmas pudding!

Rainbows and Brownies are coming to Iwade! They are both to be held in the school hall, Rainbows for girls aged 5 -7 years at 4.15 - 5.30 and Brownies for girls aged 7-10 years from 5.45 - 7.15. Parents can put down their daughters names by contacting Lisa O'Flynn on loflynn@kaba.co.uk or 07766 314083, email is preferred.

Editors Note

Welcome to our first newsletter of 2010. A very happy new year to you all from the newsletter team. I hope you all had a lovely Christmas and haven't been too inconvenienced with all the snow we've had. I know it grinds everything to a halt (including the rubbish collections!) but my children have loved it and as you'll see from our panorama on the front, it does make our village look very pretty. We had many photos sent to us taken by our villagers and have included as many as we can on page 3. I have taken the photo below from the BBC website. The image was caught by one of the satellites in space. I found it quite striking!

Tara Kent.



Disclaimer

Whilst every care has been taken to ensure accuracy of the information in this newsletter, neither the printer, editor or distribution team can accept responsibility for any subsequent alterations, errors or mistakes in any material published herein. The views expressed in any articles are not necessarily the views of anyone involved in the production of this newsletter.

Tinkerbells Early Years by Sue Nolan

Tinkerbells would like to thank everybody who supported the Christmas Fayre in December, despite the cold weather we had many stalls and activities going on. Father Christmas was very busy that day and so was Bumble the little Christmas pony. We raised £238 and had great feedback from the people who visited us. A BIG thank you to Auntie Bet and Dorothy for the wonderful cakes, raffle prizes from various local businesses, the (real) Father Christmas for taking time out to visit us in his busy schedule, everybody who ran a stall on the day, our face painting ladies, staff for their own time, Susie and Lisa for bringing the pony down, Amanda for helping us to advertise it and anyone else I may have missed out - THANK YOU, we couldn't have done it without your help!

This term we started back with snow on the ground, it has been a very cold winter. Our Topics are Keeping Safe, People who help us, Transport, as well as

covering different festivals from around the world. We have been lucky enough to have Policemen and Firemen visit the setting with their vehicles talking to the children about stranger danger, keeping yourself safe, and what to do in case of fire, stop, drop and roll. Children (and staff) really enjoyed their visits. Staff at the setting are also very busy, we have been lucky enough and been successful to go for the Kent Quality Mark. This is an accreditation taking up to a year to achieve so wish us luck.

If you have a child coming of age for attending a setting please come and visit, an appointment isn't necessary, you may phone for a prospectus or visit the setting and collect one yourself. We run a waiting list for the new terms and are happy to answer any questions you may have. Let's hope the Spring weather is just around the corner, we could do with a bit of sunshine and warmth.

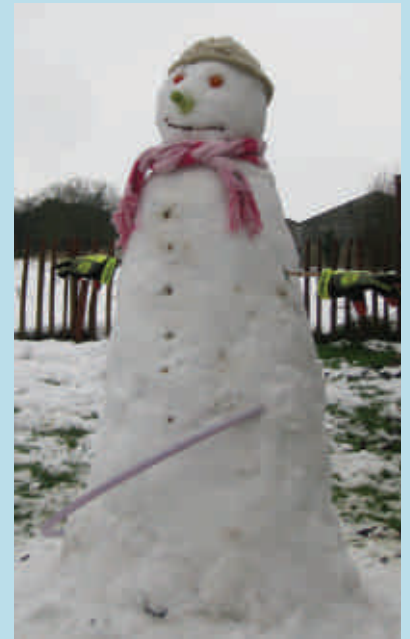
Expedition of a lifetime, but not just for my life by Liam Botterill (Iwade)

In July 2011, 26 students from Rainham Mark Grammar School will be travelling to Kathmandu, Nepal, where we will take part in a 3 week expedition followed by a community support project, where we will help to renovate and improve a local school to help children improve the environment in which they learn. This will be followed by a 4 day rest period in which we will be able to visit the sights of Nepal to experience the culture. To do this I will have to raise £3000 sponsorship to cover the

cost of travelling and the cost of helping the community. I have taken a part time job to cover the cost of my travel but this is not enough. I am running many events to help fundraise for this trip, I write this article to appeal to your generous side. If you would like more info about the trip, fundraising events, or to make a donation, please me on liam_botterill@hotmail.com, or at 07504740630. Details of all the fundraising events will be posted on iwadevillage.co.uk, and I invite you all to attend.

Snow, Snow and more Snow! by Tara Kent

Here at the Iwade newsletter we love it when we're sent things from our villagers. You can imagine how chuffed we were when we were sent this lot! We just had to share them with you all.



Iwade Beavers, Cubs & Scouts

Don't forget we have Beavers for 6 to 8 year olds and runs Monday 6.00pm to 7.15pm, Cubs is for 8 to 10 year olds and runs Mondays 7.15pm to 8.30pm and Scouts is for 10 to 14 year olds and runs Thursday nights 7.15 to 8.45pm. All at the

Village Hall. We have a waiting list at the moment but it is worth signing up because if we can get some more parent helpers then we can take more children on. For more information please check out www.1stiwadescouts.org.uk

Looking for a new hobby for the new year? We are looking for someone to join us on the editing team of the Iwade Newsletter. Full training will be given. Interested? Get in touch with us using the contact details on the back page.

Iwade WI by Hilary Foulds

Iwade WI is now well into the new programme for 2010. We continue to meet mostly in the village hall on the third Wednesday of each month at 7.30pm. The next meeting is 7.30pm on Wednesday 17 February. We have solicitor Daniel Bennett coming to speak to us about Collaborative Family Law. It sounds dry but our President was impressed by him when she heard him speak at the Auditions Day the East Kent WI Federation Office arranged last year for prospective speakers. When husbands and wives or partners break up the whole family can suffer and grandparents can sometimes experience difficulty in maintaining contact with grandchildren. Grandparents have rights too and Daniel is going to be able to advise us about them. We normally have

a competition every month and this being February we decided the competition should be a hand made Valentine's card. Members are asked to bring their completed card along to the meeting if they wish to have a go. The annual subscription to the WI nationally is, for 2010, £29.50. Part of this goes to the National Office and the local WI gets to keep a proportion to pay for the year's programme of speakers. There is a meeting every month to which members are entitled to attend free of charge, though we do make small additional charges for coffee and cake and an optional raffle. Nothing costs more than 50p. As well as the monthly meetings we arrange occasional outings for which members pay, such as the trip to Brick Lane Music Hall which we are repeating this year. This is also

taking place on Wednesday 17 February so this is going to be a busy day for Iwade members. We are quite a small friendly group of just over 20 members so why not come and join us. You will be made very welcome. The March meeting is Wednesday 17 March. We have Margaret Clift coming to present her Sweets and Chocolates talk. We are going to get into the spirit of the talk with a chocolate based raffle on the night. The competition is unrelated to the talk as on this occasion we have to select Iwade's entry to the Newington Group of WI's competition instead, this time for a 16"x16" fabric cushion. If you would like to enquire about joining Iwade WI or would like more info about our programme for 2010 just call secretary Hilary on 01795 474686.

Churchwardens notes by Sylvia O'Shea

I realise that it is now the end of the month but we send you all our sincere wishes for the new year. We pray for peace in the troubled areas of the world and for your hopes and dreams to be fulfilled. Let us all make a resolution to get to know a neighbour we've yet to know properly, not just to say hello in passing, invite them in for a cup of tea (or a sherry!). Were you among the 250 plus who attended the 2 carol services? A great time was had at both, ending with The 12 days of Christmas with laughter. Thanks to all, those who planned and who came. It wouldn't have been the same without you. If you enjoyed it, come along and try the family service one month. It is held at 10.30am on

4th Sunday of each month. It only lasts approximately 1 hour and is a light family service. The children take an active part and also have a craft time during the service. Pop along and give it a go. We also offer tea, coffee, squash and biscuits after while you have a chat. Did you lose a pair of glasses over Christmas? A pair were found in church (in a hard case) after the services. Give Sylvia a ring on 478103 to collect. The church is open for you to visit on 2nd Saturday of each month 10am -2pm. We usually have a small selection of home made cakes for sale too. Now for the sad news. Lynda and Tony MacGowan are moving to Birchington on January 15th. As you know Lynda played the organ for

services and will be sadly missed. She and Tony also led the village walks on Thursday morning, as well as being active members of All Saints. We wish them happiness and good health in their new home. A date for your diaries – 6th March there is a quiz night in village hall. Please contact Sylvia or Rev Francis on 876449 to reserve your table. £5 per person, maximum of 6 per table.



© Steven T Beard 2010

Parish Council Meeting Notes by Nicola McKenzie

Taken from meeting of Tuesday 10th November 2009

Clerk advised that matters are in hand with regard to obtaining a K.C.C. grant to purchase a Parish Map.

Parishioners

Reference was made to the parking situation in School Lane. Cllr. Whiting stated that the Transport Committee is looking at moving the zigzag lines outside the school and that, together with the proposed junction change (no decision has been made on the preferred layout), could ease the situation for residents.

Note that since this meeting, according to County Cllr Alan Willicombe the zig zag lines are now on the Highways Work Program as they were passed at the Joint Transport Board. Timescales not known. The zigzag lines will be moved to the area outside the school office pedestrian entrance. Also since this meeting KCC have approved Scheme 1 for the School Lane/Ferry Road junction as per the Public Consultation in the November newsletter. This gives priority to traffic travelling along Ferry Road and The Street with School Lane as a side junction

The dog waste bag dispensers are empty. Members commented that these disappear quickly every time the dispensers are filled. Parishioners suggested charging dog owners for the bags. Action Clerk/Cllr. Hurrell

Borough Cllr. Ben Stokes reported that the Headteacher of Iwade School would like a school crossing person and needs support from the Parish Council. Members unanimously

agreed to support the school in its effort to obtain a school crossing person.

Cllrs. Stokes was pleased to report that Iwade Herons have obtained a grant of £400 and Cubs £400.

County Councillors – Cllr. Willicombe will be walking around the village with PCSO Platt to look at any trouble spots. He will also be attending the Biomass Fuels' meeting at Kemsley.

Cllr. Whiting reported that funding for the Village Hall car park and Parish Map is currently being looked at.

Community Warden – sent her apologies for not being able to attend the meeting. A report on the work she had carried out over the last month was circulated to Members.

Note that since this meeting Julia Warner has resigned and we have temporary cover for Iwade. The mobile number remains the same.

PCSO Melanie Platt - The Chairman welcomed our new PCSO to the village and the Parish Council looks forward to working with her. Melanie informed that there will be a PACT meeting at Iwade Village Hall on the 10th February at 7.00 p.m.

Statement Relating to Police Investigation - The Vice-Chairman referred to articles in the local press concerning the previous Clerk. At the beginning of the year two members of the Parish Council, whilst auditing the books of accounts, picked up the financial irregularities in the accounts. These irregularities resulted in the previous Parish Clerk being

charged with fraudulent activities. As a result of the outcome of the court case the Parish Council has written to NatWest Bank and the Police to ensure the recovery of the funds in full. Once this is completed the Parish Council will be in a position to prepare the necessary financial accounts for the year ending the 31st March 2009 and to repay outstanding sums wrongly claimed. The new Parish Clerk has informed the Audit Commission accordingly as to the reasons why it is late in submitting the full set of accounts. The Parish Council recognises what has happened and would like to reassure Parishioners that strenuous measures have been put in place to prevent this from occurring again.

Finance

Laptop – Clerk reported that an order has now been placed with Dell; the cost of the laptop, Microsoft Office and Anti-Virus software, external hard drive for backing up, mouse and bag came to £560.72, this includes V.A.T. which is recoverable.

Parish Map – The Clerk has forwarded details and costs for a Parish Map to Cllr. Whiting and is now awaiting the outcome of the request for this grant.

Repairs to Lamp Columns – Clerk reported that to completely replace the column near 60 Sheerstone would cost £620, plus the disconnection /reconnection fee from EDF Energy. She has therefore instructed LCP to go ahead with repairing this column (£300 for a new lamp plus £75 to

Continued on page 6

Parish Council Meeting Notes Continued

straighten the column) and the one outside number 5 Springvale (£300 to replace the lamp).

Cheques were raised for the Land Registry, Laptop, Wages, Inland Revenue, Petrol expenses, Handyman and Accountants' fees.

Correspondence

Policing Kent 2010/13 Survey - noted

Police Briefing For Parish Councils 2nd December, 2009 Agreed that Cllrs. Robb and Hurrell to attend. Cllr. Wilks also volunteered to.

Planning

SW/09/0755 – the provision of temporary haul road (3 years) whilst land to the west of Woodpecker Drive/Helen Thompson Close is developed – At Swale Borough Council's Planning Committee meeting on the 5th November, this item was deferred until after a site meeting which will take place on Monday 30th November, at 9.30 a.m.

SW/09/0756 – Erection of 98 dwellings – Land off Grovehurst Road, Iwade – At Swale Borough Council's Planning Committee meeting on the 5th November, this item was deferred until after a site meeting which will take place on Monday 30th November, at 9.30 a.m.

Taken from Planning meeting of Wednesday 25th November 2009

SW/09/TEMP/0042 – Countryside Heat and Power Ltd. – Installation of a small scale Biomass Power Plant within an existing building for the generation of renewable energy from low grade waste wood – Ridham Dock Road, Iwade, ME9 8SR. – agreed Cllr.

Wilks to prepare a response and to point out to K.C.C. that in addition to the existing incinerator at Kemsley Paper Mill, plus the additional one they are seeking to install; we understand there are three companies looking to apply for planning permission for Biomass Burners/Incinerators at Ridham Dock – is County intending to allow all four? This will make a total of 5 Incinerators/Burners in or near to the Ramsar/SSSI site and also near to a populated area.

Taken from Site Meeting of Monday 30th November (re the 98 houses behind Woodpecker Drive to be built by Wards Homes)

Councillor Peter Wilks noted that the Planning Officer Richard Allen declared that the Northern half of the old orchard will be public open space. He also stated that they were in negotiation with Natural England and would satisfy their requirements with new conditions. The Wards Agent was given time to speak in favour of the development and stated that they would develop the Southern area first. The Keystone representative was questioned by a Councillor at the Site meeting and said it was quite straightforward to convert arable land to mitigation land with special grass seed. The residents present voiced concerns over road issues and traffic.

Summary of Swale Planning Committee Meeting Agenda item 538 (re the 98 houses behind Woodpecker Drive) Planning permission for the 98 houses behind Woodpecker Drive to be built by Wards Homes was deferred at the

December Swale Planning Committee meeting on the basis of harm to newts, highway concerns and also awaiting further views from Natural England.

The Ward Member, also a Member of the Planning Committee, spoke against the proposal. He requested that the item be deferred to allow clarification to be sought with regard to potential harm to the newts from chemicals previously used on the agricultural land and highway concerns and further views of Natural England.

Note that the January Planning Committee meeting at Swale will take place on Monday 11th January. Both the Ward's development of 98 houses and the Hillreed development are on the agenda for this meeting.

You can read the parish council notes online at www.iwadevillage.co.uk (parish council link) or why not make it a new years resolution to go along to the meetings. They are held at Iwade Village Hall on the 2nd Tuesday of every month at 7.30pm. The next meeting is 9th February.



Poo!

We know most of you do but just a gentle reminder to pick up after your dog. It's been particularly unpleasant when the children have been picking up snow from the ground and building snowmen. Let's keep Iwade clean and poo free!



Domestic Heating & Plumbing Engineer

- Boiler Servicing & Repairs
- Heating Installations
- Gas Safety Certification
- Power Flushing
- Domestic Plumbing

Tel: 01795 478877 Mob: 07886943553
Email: info@artygroup.co.uk



Great cakes. Great fun.



Bakers' World
Cakes for all occasions & reasons

01795858268 www.bakersworlduk.com

ELHAM FUDGE & HOSPITALITY CATERING
Granny Mannings Hand Made Pies & Tarts



Delicious hand-made Kentish fudge made in the heart of the Kent Countryside
Hot and cold food for any occasion, Inside and Outside, Individually tailored menus,
Bar-B-Q, Event Catering, Shows, Weddings, Birthdays, Corporate Catering, Hand made
pies and tarts

Contact Dave Manning on 01795 421095 or in writing to 28 Sheerstone Iwade Nr Sittingbourne Kent
ME9 8RN



Property Maintenance

COMMERCIAL, DOMESTIC, INDUSTRIAL, ELECTRICAL,
CARPENTRY, FLOORING, PLASTERING, PLUMBING, HEATING,
ALL GENERAL BUILDING WORK, EXTENSIONS &
RENOVATIONS, SPECIALISTS IN REFURB & REFIT - KITCHENS
& BATHROOMS. INSURANCE WORK WELCOME
01634 324422 / 07980 623 103 AFFILIATED TO MEDWAY
FAIR TRADER SCHEME

**The Farm Shop at Featherbed
Farmyard**

Fresh produce and free range eggs
Animals, children's play area and picnic
area. Open Monday to Saturday 9 to 6 and
Sunday 10 to 4. Find us at Featherbed Lane
Iwade Sittingbourne ME9 8RA 01795 478210



**Unisex Hair and Beauty
Salon offering full range of
specialised treatments**

OPEN UNTIL 9PM MONDAY TO WEDNESDAY, 8PM
THURSDAY AND 5PM FRIDAY AND SATURDAY
TELEPHONE 01795 474555
IWADE VILLAGE CENTRE IWADE ME9 8UW

PLANT SALE

Over 1000 plants for sale at wholesale prices.
Stock clearance now on at
Basser Hill Farm | Basser Hill | Iwade ME9 8GY.
Open Monday to Saturday 10-5 and Sunday 10-
4.
Telephone 07837 050715



NVQ KENT LTD

01795 436471
07896 326 553
Sandra@nvqkent.co.uk
www.nvqkent.co.uk

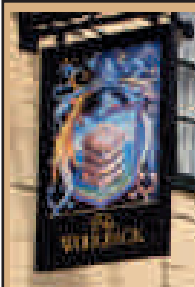
Training Provider and UK Online Centre member at
5 Alefe Way Iwade Sittingbourne ME9 8TX
Open Monday to Thursday 9am to 5pm and Fridays
9am to 4.30pm. Closed for lunch 12.30-1pm



01795 475294
07738 678567
Info@ggs-services.co.uk

- Guttering Repairs
- Guttering Replacements
- Guttering Cleaning
- Fencing
- Garden Clearance
- Shed/Garage Clearance

**Specialist Floor & Wall Tile Fitter local to
Iwade. Experienced in laying Natural Stone,
Slate, Travertine, Limestone, Porcelain and
Ceramic. 20 Years experience. Call Ray on
01795 553903 or 07503 478407 for a free
quotation.**



The Woolpack

17 The Street Iwade ME9 8SH
01795 472656
Restaurant open midday to 9pm
New Chef
New Menu

Dates for the Diary (February)

Mobile Library Thursday 4th February 10.40 at the end of Sheerstone (Springvale end). ID required for new ticket.

Farmer's Market Sunday 7th February 10am to 1pm Iwade Village Hall

Holy Communion Sunday 7th February 11am All Saint's Church Iwade

Parish Council Meeting Tuesday 9th February 7.30pm Iwade Village Hall

PACT Meeting Wednesday 10th February 7pm Iwade Village Hall

Gardening Club Thursday 11th February 7.30pm Woolpack. Call Ann on 599755 for more details

Brighton Model World Friday 12th February Iwade's Sir John Briscoe's Circus have been asked to display.

Church Open Day Sunday 14th February 10am to 2pm All Saint's Church Iwade

Family Communion Sunday 14th February 11am All Saint's Church Iwade

Mobile Library Thursday 18th February 10.40 at the end of Sheerstone (Springvale end). ID required for new ticket.

Holy Communion Sunday 21st February 11am All Saint's Church Iwade

Good News Van Wednesday 24th February 10.15am to 11.30am All Saint's Church Iwade

Family Service Sunday 28th February 10.30am All Saint's Church Iwade

Useful Contact Details

Swale Borough Council 417850 csc@swale.gov.uk | Kent Highways - 0845 8247800

Crime Reporting line (manned 24/7) 01795 477055

PCSO Melanie Platt 0777 222 6183 melanie.platt@kent.pnn.police.uk | A/PS Darren Walshaw 07800 675 375 darren.walshaw@kent.pnn.police.uk | Sergeant Daniel Worthington 01795 419120

daniel.worthington@kent.pnn.police.uk | Neighbourhood Watch 01795 419211 | Crime Stoppers 0800 555 111 | Anti-Social Behaviour Team 01795 417575 | Fly Tipping/Graffiti/noise nuisance / Dog control and Abandoned Vehicles 01795 417850

Kent Community Warden (temporary cover) 07872 378 220

Gas Emergency 0800 111 999

Kent Healthwatch 08458 247 103

Iwade All Saints Church Contacts Revd Canon Alan Amos 01795 842913 (priest-in-charge) | Revd Jacky Davis 01795 842557 | Mrs Sylvia O'Shea, 01795 478103 (churchwarden) | Maria Wilkinson 01795 477133 | Rev David Webb 01795 424502

Village Hall Hire call Sue on 01795 475967 (iwadevillagehall.co.uk)

Parish Council Parish Clerk Lynda Fisher 01795 477015 Monday to Saturday before 8pm

iwadepc@blueyonder.co.uk | Chairman Dave Manning | Vice Chairman Derek White

News Contacts Newsletter Editor Nicola McKenzie newsletter@iwadevillage.co.uk 01795 439892 | Tara Kent tarakent@sky.com | Newsletter Distribution Janet Gregory

janetgregory117@btinternet.com

News Correspondent for local press Amanda Hurrell 07866 413207 thehurrells@fsmail.net

iwadevillage.co.uk Nicola McKenzie nicola@iwadevillage.co.uk 01795 439892

Organisation Contacts: Iwade School, 01795 472578 | Iwade Health Centre 01795 413100 |

Bodycare 01795 474555 | Budgens 01795 421854 | Happy Days 01795 424348 | Heaven 01795 435958 |

Ickle Pickles 01795 474551 | Iwade Garage 01795 438988 | Lloyds Pharmacy 01795 439368 | NVQ Kent Ltd 01795 436471 | Town & Village Homes 01795 422776 | Woolpack 01795 472656

Clubs Cubs and Beavers Village Hall Mondays 6.15 to 8.30 | Darts Woolpack TuesWed and Thurs male and female | Fishing Club Gordon Dickson 07889 155 315 | Gardening Club Ann 599755 | Health Walks

Jan 471173 | Herons Football Club Debbie 439711 | Junior Tygers 07810 204 739 | Lamplighters Wynn

Webb 424502 | Model Flying Club 877918 | Musical Theatre Club 07590 375 204 | Nyumon Karate Do

07709 632 879 | Parent and Toddler Tuesday 9 to 11 Village Hall | Scouts Thursdays 7.15pm Village Hall

skip@1stIwadeScouts.org.uk 431968 | Tinkerbells 07818 833 435 | Weightwatchers Tuesdays 6.45 to 8.15

Iwade School | W.I. Hilary Foulds 474686