

Iwade Village Newsletter

September 2009

Broadband Update by Nicola McKenzie

By the time you read this KCC will have received proposals from potential suppliers (deadline 7th August) and passed them on to the Broadband Committee. The Broadband Committee were due to meet on 27th August to discuss proposals and decide which proposals they'd like to look at in more detail. We are likely to get a range of technologies offered including satellite, wireless and sub-loop unbundling. Thank you to all of you who completed their Broadband Survey – nearly 100 were completed online and another 65 or so paper surveys posted at Budgens, Costcutters and the Health Centre. Thanks again to those venues for housing a Survey Box. A late entrant in the Broadband Draw prizes was the Woolpack with a Sunday lunch for two in the restaurant so thank you to the Woolpack for that donation. And thank you again to

Budgens, Costcutters, Iwade Garage and Heaven for donating prizes to the Broadband Prize Draw. We invited Councillor Roger Truelove our previous KCC councillor for Swale Central to do the Prize Draw at the Woolpack on 30th July. Councillor Ben Stokes also attended and drew some of the prizes out of the hat. Committee members generously abstained from the Draw so there was no question of rigging! Rigging - imagine! Congratulations to the following addresses for winning a prize: Woolpack Meal for 2: 34 Mallard Crescent, Heaven £20 Unisex Hair or Beauty voucher: 4 Pintail Drive, Iwade Garage Mini Valet: 13 Chetney View, 5 bottles of wine donated by Budgens and Costcutter: 5 Turnstone Close, 9 Saxon Walk, 15 Mansfield Drive, 15 Monins Road and 19 Stangate Drive.



Use Your Vote

By Nicola McKenzie

Kent Highways have included a public consultation document in the centrefold of this newsletter regarding the new proposals for the School Lane / Ferry Road junction. There is a postcard which will allow you to vote for one of 2 options or vote for option 3 to leave the junction as it is. There is also a link to the KCC website if you are online to allow you to vote online. This will also be published on iwadevillage.co.uk so you'll find the link there too. Take this opportunity to read what Highways have to say, look at the plans and then use your vote to vote for the safest option for your community.

The allotments committee are pushing for Swale to incorporate allotments into the next phase of development in Iwade as part of section 106. Watch this space.

If you are concerned about Swine Flu and would like more information call the Swine Flu hotline 0800 1513 100/200 or check www.nhs.uk/swineflu. Iwade surgery advises any patients with flu like symptoms not to come to the surgery but to call and request a doctor to ring.

What's on in Iwade this month

by Tara Kent

It's a new month and a new school term. It's a great time to start up a new hobby or join a new club. We are very lucky in Iwade that there's always something going on! If you know something that we don't please feel free to let us know using the contact details on the back page.

For the little ones

Parent and Toddler Group
Iwade Village Hall Tuesdays
9am to 11am termtime only.

For School age children

Junior Tygers Iwade Village Hall
Thursdays from 4.15pm based
on Taekwondo girls and boys
age 5 to 8 – 07810 204 739.

Musical Theatre Club Iwade
School Friday 3.30 - 4.30 for all
ages from reception to year 6
tel 07590 375 204.

Beavers Iwade Village Hall
Monday 6 to 7.15pm termtime
girls and boys age 6 to 8 years
old.

Cubs Iwade Village Hall Monday

7.30 to 8.30pm termtime girls
and boys age 8 to 10½.

Iwade Herons Football Club girls
and boys up to Year 2 but must
be age 5, Under 8s to 11 girls
and boys, Under 12s to 15s boys
only - contact Debbie Elliott on
01795 439711.

Lamplighters Iwade School
Tuesday 5 to 6.15pm termtime
Church Youth group - girls and
boys primary school age.

Scouts Iwade Village Hall
Thursday 7.15 to 8.45pm
termtime girls and boys age
10½ to 14.

For the Grown ups

Gardening Club – every first
Thursday of the month contact
Ann on 01795 599755 for more
details as venue changes
particularly in the Summer.

Health Walks Thursdays meet
Lloyds Pharmacy 11 for 11.15am
start – contact Lynda or Tony
MacGowan on 01795 476274.

Model Flying Club call Club

Secretary 01795 877918 or
Chairman on 01795 476535

Fishing Club contact Gordon
Dickson 07889 155 315 or at
gordon.dickson8888@gmail.com

Weightwatchers Iwade School
Hall Tuesday 6.45pm to 8.15pm

Women's Institute every third
Wednesday of the month
7.30pm – contact secretary
Hilary Foulds on 01795 474686
or hilary.foulds@hotmail.co.uk

Darts – Woolpack (for home
games) Tuesday Wednesday and
Thursday evenings – mixed,
ladies and men's – for men's
darts contact Dave on 01795
421097

Sittingbourne Speedway Club
for more details contact 01795
430014 or check out
www.sittingbourne-
speedway.co.uk

For all the family

Nyumon Karate Do Iwade
School Mondays contact
Amanda Thompson 07709 632
879 age 5 to adult.

Wanted

Please consider donating your old 2 or 3 seater sofa for use within Iwade School Breakfast and After School Club. Must be made from fire retardant material and in good condition. Please contact 472578 or jan.brissenden@iwade.kent.sch.uk if you can help.

Disclaimer

Whilst every care has been taken to ensure accuracy of the information in this newsletter, neither the printer, editor or distribution team can accept responsibility for any subsequent alterations, errors or mistakes in any material published herein. The views expressed in any articles are not necessarily the views of anyone involved in the production of this newsletter.

Scottish Country Dancing is coming to Iwade!

Starting on Friday 4th
September and continuing
every week at the Village Hall
from 8 to 10pm. Beginners are
welcome, no experience
necessary. If you want to know
more phone Mo Dalton on
583189 or email
maureendalton11@yahoo.co.uk.
It seems we really do have
something for everyone!



Circus Modeller in Iwade

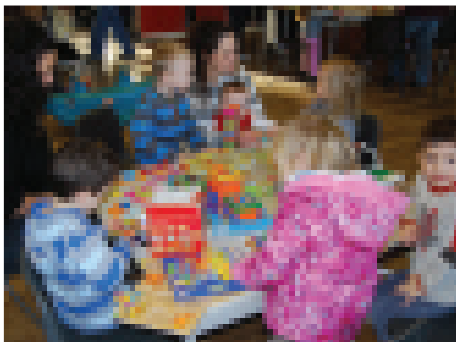
John Evans Briscoe or Sir John Briscoe as he's known in the trade has been mad on circuses ever since he was a young boy in the 50's and his mother took him sixteen miles to see a very large circus. Since then he's been building his own circus starting out with vehicles from his toy box and an old white umbrella. Fifty years later John tours the country with his 6 foot by 14 foot circus model with its own marquee that's lit up in the evening so people can admire the model through the marquee windows. Testament to Sir John's reputation as a circus modeller Sir John Briscoe's Circus has been asked to display at Brighton Model World on 12-14th February 2010, one of only



3 model circuses who've been asked all expenses paid. It must be good! If you're online then why not visit John's website at www.sirjohnbriscoescircus.co.nr

For latest news
and village
information check
iwadevillage.co.uk

Parent and Toddler by Vanessa Pollard



It's been very busy and we had lots of fun at Iwade Toddler Group. There was a summer party with a bouncy castle and lots of party food, professional photos, and most importantly, a fun day out at the Rare Breeds Centre in Woodchurch near Ashford. Lots of fun was had by all, stroking the animals and having tractor rides and picnics. We had a fantastic turn out. I am sure many children left exhausted and happy, mine were asleep by the time we left the main gate! Unfortunately we had to say goodbye to our friend Jan, who has done her stint with us as her children

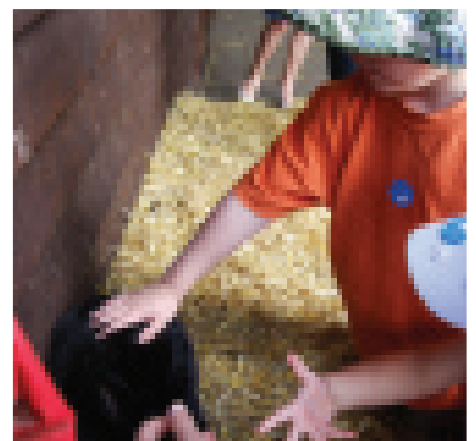
now all attend school. We thank her immensely for all her hard work and doing the jobs we didn't fancy! She has been a real asset and will be missed. We also have said goodbye to the children who are starting school in September, and we are looking ahead to the new term with new faces. We open on the 8th September at 9am, and would love to see new friends to add to our congregation!

Lots of friendly chat, company, coffee, biscuits and crafty art, song time, our new story corner, an area for babies to roll around and a new playhouse we are planning to buy! What more could you want? Our craft table has now been taken over by Helen and myself, and will include handprints, masks, leaf printing, bulb planting, blow painting, stain glass window making, bookmarks; but to mention just a few! We have lots of vendors lined up to sell their

Village Hall Committee

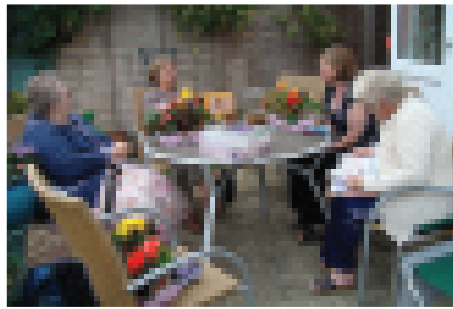
The Annual General Meeting of the Iwade Village Hall Committee will be held on Wednesday 2nd September at 8pm. This is an open meeting for residents of Iwade to keep them in touch with what has been going on at their village hall and when a new committee will be elected. If anyone has a matter for discussion for Any Other Business will they please notify the Secretary, Rev D. Webb on 424502 or the Chairman Mrs L MacGowan on 476274 before the meeting. Any matters brought up at the meeting will be discussed by the new committee at their first meeting.

wares, or for you to just have a look at. Lost children bracelets were very popular this summer, and so were card and book sellers. Come along and have some fun; a chat with other parents and let the kids play. We open on Tuesdays from 9:00am until 11:00am (term time only). All parents or carers are welcome. The first visit is free, then it's £1.50 for a child and an extra 20p per sibling. Tea and coffee, juice and biscuits are included in the entry. See you in September!

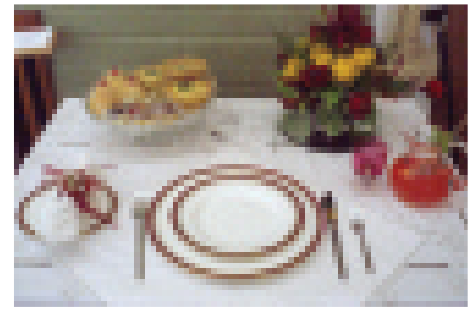


Iwade W.I. *by Hilary Foulds*

By the time you receive this newsletter the WI will probably have enjoyed a BBQ hosted by member Sarah on 19th August. This has become an annual event and is a highlight of the WI yearly programme, looked forward to in anticipation and well attended. At this meeting Iwade's entry to the Newington Trophy competition will have been chosen, the competition being for a CD cover for Jerusalem. The next meeting of Iwade WI is 7.30 on Wednesday 16th September in the Village Hall. This is Iwade WIs annual Harvest Supper when we invite members from other WIs in our Group to join us in a fabulous supper, entertainment and a raffle. To give you a flavour of what goes on at your local Womens Institute I thought you might be interested to hear what we've been doing this summer. You might even be encouraged to think about joining us. In July member Hilary held a fund raising garden party at her home. This is the 3rd year she has held this event and every year it's chilly. The WI is made of sterner stuff however and members weren't going to be put off by a stiff breeze so they enjoyed a stiff Pimms and a bowl of strawberries instead. The following week there was yet another Garden Party but this time it was part of the East Kent Federation of WIs celebrations to mark their 90th birthday. The party was held at Goodnestone Park near Wingham, Canterbury. The gardens have many centuries of history behind them but also provide the setting for special events, including concerts, plant fairs and wedding receptions so it



was an ideal venue for a WI event. At our regular monthly meeting in July we had a talk from a qualified Colour Analyst and Image Consultant from a company called Imagination. The talk was about how to tie and wear scarves to enhance an outfit. The consultant brought masses of scarves with her in all shapes, sizes and colours. It made me want to go out and buy a whole load of new scarves. We have an annual outing in June every year and this time we went to Mount Ephraim in Faversham. This is the perfect place for a relaxing day out in Kent where you can unwind in the 10 acres of gardens set in the heart of an 800 acre estate with magnificent views over the Swale estuary. As our meetings are in the evening the owners kindly agreed to this and their caterers supplied us with a light supper in the Edwardian Tea Room. On behalf of Iwade WI, members Val and Glenn entered a table top competition in July, for the Lurcock Cup. This is organised by the Sittingbourne Gardeners



& Flower Arrangers Society. I am proud to report they came first! In September, Glenn is holding 2 afternoon knitting workshops at her home on the 12 & 19 September. Hilary is holding a card making workshop on 8 September. We hope to be producing items to sell on our fundraising WI table at the November Farmers Market. On 24 September we are going to have a go at greyhound racing at Sittingbourne Stadium. The following day, 25th we are going to Minster for a Group Meeting. This is always a good night out. Some 100 members of WIs in the Newington Group attend and there is normally good entertainment. We are also looking forward to lunch at the Upchurch Golf Club on 8 October another event organised as part of the 90th birthday celebrations of the East Kent Federation of WIs. If you would like to join Iwade WI just come along to a meeting, contact secretary Hilary Foulds on 01795 474686 or email hilary.foulds@hotmail.co.uk if you would just like to know more about the WI.



September in the Garden by Ann Menzies

September is a month for thinking ahead, as well as harvesting. For those of you who grow your own food, there are still varieties to plant now which will give you crops early next year. Although overwintering onions don't keep well, they are ready about 6 weeks earlier than spring sown sets, and now's the time to get them into the soil while they still have time to put on some root growth before it gets colder. Winter lettuce varieties will stand through colder months, but then start growing again to give a spring crop, so now's the time to get these in too. Although seeds

packets recommend sowing in July or August, I've been lucky with growing mooli, or Japanese radish, from sowings in September. In fact the losses from cabbage root fly has been less than from earlier crops. These stood well in the ground until March, providing a great winter vegetable. September is also the time to think about spring colour. The shops are full of bulbs, and it's much cheaper to sow now than buy pots of ready grown bulbs in spring. If you want bowls of Hyacinths in flower for Christmas, buy prepared bulbs, pot them up, and put them somewhere cool



and dark, or come along to the Garden Club bulb planting evening. Daffodils should be planted nice and deep, at least twice the depth of the bulb if you want them to flower for years and years to come. It's better to wait until November to plant tulips, but if you are tempted to buy now, store them somewhere cool and dark so they don't dry out.

Planning and preparing for the next growing season starts now!

Church Wardens Notes by Sylvia O'Shea

We pray this is in time to welcome you to the Special Benefice Service to be held at Iwade on August 30th. Members of all six churches gather for the 5th Sunday of the month at one church on a rotation basis. August is our turn. This means that we benefit from members of the choirs some of them have coming to lead the hymns. Makes a lovely change for All Saints. Service starts at 10.30am. Do come and join us. As mentioned last month, on 6th September the Annual Walk and BBQ at 29, The Street takes place. You are invited to both or just the Walk or B.B.Q. If possible, can you please ring Lynda on 476274 if you are coming to the B.B.Q. to aid with catering? Thanks. September 12th Church would normally be open for visitors - this month time extended from 10am to 6pm as it is also the Sponsored Bike/Hike Day. Last year several energetic folk rode their bikes for sponsorship,

raising over £500 between them. Would YOU be willing to do so this year? The event is arranged by Friends of Kent Churches - half of all money raised is donated to the 'Friends' half to your nominated church, (which we hope would be Iwade). At present we are endeavouring to raise nearly £30 000 for essential repairs and the Friends have generously offered £10 000 grant as part of this appeal. They work tirelessly raising funds to help keep these beautiful old buildings in good repair. If you need more information, please contact Sylvia on 01795 478103. She has sponsor forms too. If you cannot ride or walk around several churches, would you please consider pledging a few pennies to Sylvia's effort? Each year she is sponsored for manning the church from 10am-6pm to welcome the riders/walkers. Give her a call on the same number if able to help please. Several recent visitors

to the church have been very complimentary about the tidiness of the churchyard and how well maintained it looks. We have to thank the contractors for cutting the main area of grounds and Mrs Pat Smith for keeping the grass cut around the memorial area. Early notice of 2 dates to keep free in your diaries. October 10th at 7pm when the Harvest Supper will be held in Village Hall, and November 14th for the popular Quiz Night - again in Hall at 7.30pm. It's time to think of the Christmas Shoe Box Appeal and what we can fill them with. At Church we support the BLYTHSWOOD CARE Appeal and have a list of suitable items. Just ask Sylvia for one (478103). Boxes will need to be ready for collection at Iwade by October 25th to ensure time to get them to BLYTHSWOOD on time. PLEASE do consider if you can help. Perhaps several of you could fill a box. Just a normal size shoe box is requested.

Parish Council Meeting Notes

Held on Tuesday 9 June, 2009

Declarations of Interest

Cllr. Fearn declared an interest in the Handyman vacancy and stated he would take no part in the discussion.

Minutes of the previous Meetings

Annual Parish Council Meeting held on the 12 May – agreed with an amendment on page 2, paragraph 4 ‘could only supply one due to’.

Parish Meeting held on the 15 May – agreed, with an amendment on page 1, paragraph five should read ‘commenced in 1998’

Planning Meeting held on the 22 May – agreed with the amendments on page 2, first paragraph ‘are what the developers are bringing forward now’; and third paragraph ‘Policy AAP9’.

Matters Arising from the Minutes

Village Centre - Provision of Vehicular Barrier or Bollards across the Entrance to Public Footpath at Rear of Car Park – Clerk has spoken to Wards Homes, who are in the process of arranging to have a contractor install the bollards.

R.O.S.P.A. Report on School Lane Playing Field – due to a knee injury Cllr Hurrell was not present to report on this matter.

Bus Shelter, Grovehurst Road/Seat It looks as though the remedial work has been carried out, although the Clerk has not been notified of this by Wards. Wards have, agreed to the Parish Council’s request not to install the seat in the shelter, and will place it in a location of the Council’s choice, provided

we supply a concrete base. Councillors asked the Clerk to contact Swale Borough Council to see if they are willing to have it installed in the children’s play area in the village centre park.

Clerk was also asked to approach Travel Link to see if they would be happy to stop at the Grovehurst Road Bus Shelter and for her to ask Highways to refresh the white lines on this corner.

Gate/Sign at Village Entrance – Clerk has contacted a Highways Engineer who is willing to have the gate and sign reinstated. He has requested a photo of the gate so that he can replace like with like. Cllr. Hyde suggested he look at the gate at the entrance near Pond Farm, which is identical to the one taken away by Highways.

Dog Waste/Litter Bins – Clerk has contacted the Dog Warden/Anne Ryman to ensure that the dog waste bin in the village centre is emptied. Anne Ryman has informed the Clerk that there are 8 litter bins within the village (Clerk has asked for a site plan showing their location) – Councillors would like to know the frequency of emptying these bins.

Southern Water – Clerk has had discussions with the Environment Agency regarding the discharge of sewage into the stream. She contacted Southern Water for an update on the incident reported by Cllr. Fearn and was informed that there was no sign of pollution. Having insisted that there was a problem she was then put through to Ken Guest, a Field Investigation Technician who promised he would get back to her regarding a meeting with

the Parish Council – to date this has not happened. During the course of her conversation with this gentleman the Clerk also mentioned the subsidence on the area of land on the corner of School Lane/Ferry Road. Councillors asked the Clerk to write seeking a meeting regarding the stream and the expressing concern over the lack of response and to invite the Environment Agency to this meeting.

Visitors/Public Time

Borough or County Councillor - neither attended the meeting.

PSCO Update – apologies has been received from PSCO Lyndsey Woods, who was not present. Lyndsey Woods has been informed by Anne Ryman that we no longer qualify for the graffiti buster in the village. Clerk to write to Anne Ryman to see if this is correct.

Community Warden – Julia Warner was welcomed by the Chairman to Iwade. She has been in the village since the 12 May and already has addressed such issues as fly tipping incidents, dog waste, rubbish bins and car vehicle tax issues. She has also made contact with playgroups and mother and toddler groups, carried out holiday house watches and made reassurance calls to residents in the area. We look forward to working with her in the future.

Cllr. Fearn queried maintenance of the grassed ‘footpaths’ and questioned ownership. It was suggested that it would be appropriate for parishioners to contact the developers /highways to ascertain who maintains these areas.

Continued overleaf

Parish Council Meeting Notes (continued)

Correspondence

The Chairman advised the Parish Council of a letter he had been handed from Brian Groves, who had tendered his resignation as Councillor. Cllr. Wilks commented that he was very sorry to see that he had resigned and added that Brian Groves has given long service to the Borough Council (he was a former Mayor) and the Parish Council. He was also a member of the Iwade Action Group. The Clerk was requested to write to Brian Groves thanking him for his service to the village and commenting how sorry the Councillors were to see him resign.

It was also noted that Roger Truelove was not re-elected as County Councillor for Iwade. Clerk was requested to write to him thanking him for all the work he has carried out for the Parish Council.

KCC Emergency Planning – Cllrs. Gregory, Hurrell and the Clerk to attend the training course on the 3 October, 2009.

Village Lighting Update

Clerk to contact PFL requesting that they take over the lighting maintenance, on a Responsible Maintenance contract, for a period of one year.

Planning

SW/09/0424 RDM - First Floor Extension, 54 Wigeon Road, Iwade, Kent, ME9 8WQ – no objection.

APP/225/A/09/2103274/NWF – Appeal – variation of condition (8) of planning permission SW/02/0639 to extend opening hours by 30 minutes to 10.00 p.m., 1 School News, School Lane, Iwade, ME9 8UW

– the Parish Council's previous comments will be forwarded to the Planning Inspectorate.

Kent Minerals and Waste Development Framework: Adoption of revised Kent Minerals and Waste Development Scheme – noted and Clerk to obtain copy.

Village Handyman

Following a discussion on the applications received, the Clerk was instructed to write to those shortlisted inviting them to attend for interview. The Chairman, Cllr. Hurrell and the Clerk will be present at the interviews.

Iwade Broadband Committee – request for loan to cover Survey Expenses pending receipt of K.C.C. Grant. Cllr. Gregory informed Members that at the last meeting of the Broadband Committee it was agreed to survey villagers to ascertain their views on broadband and requirements. The cost to print a survey, to be circulated to 1300 homes, is £50, and she asked if the Parish Council would be willing to loan this money to the Committee, pending receipt of the grant. The Chairman proposed the motion and it was seconded by Cllr. Derek White – loan agreed.

Finance

Internal Auditor – agreed to pay the outstanding account to Stephen Parkins and Clerk to write expressing concern that he had not raised queries relating to the accounts.

Lamplighters – agreed to pay for the hire of the school hall on this occasion, but to request Reverend Webb to look at subscriptions.

Cheques raised at this meeting:

Society of Local Council Clerks - £94.00p

Stiddard Forbes Ltd. - £11.50p

Peter Wilks (Printing) - £4.20p

Lynda Fisher (Wages May) - £323.08p

Inland Revenue (May Tax) - £80.80p

Swale Borough Council (Printing) - £18.00p

Lynda Fisher (Stationery) - £10.00p

C.P.R.E. - £212.50p

Kent County Council (Lamplighters) - £380.00p

Walks and BBQ Sun 6th Sept

Walks 2pm, Starting from 29 The Street. Long - 5miles, Short - 2miles Both mainly flat ground, but wear suitable shoes and bring a drink. Dogs on leads permitted although there are a few stiles. Short walk not suitable for buggies.

BBQ 4pm at 29 The Street for everyone i.e. nonwalkers and walkers Adults £3.50, Childn £2.50 - young and old - come along for a natter and something to eat. All in aid of Iwade Church.



2007 Walk Photograph by ©Steven T. Beard 2009 All rights reserved



FENCING
DECKING
PATIOS AND PATHS
GUTTERING
FREE PRESSURE TREATMENT

Tel 07886 943 553 or 01795 478877
or visit artygroup.co.uk

Great cakes. Great fun.



01795 421095 www.richardworld.co.uk

ELHAM FUDGE & HOSPITALITY CATERING
Granny Mannings Hand Made Pies & Tarts



Delicious hand-made Kentish fudge made in the heart of the Kent Countryside
Hot and cold food for any occasion, inside and Outside, Individually tailored menus,
Bar-B-Q, Event Catering, Shows, Weddings, Birthdays, Corporate Catering, Hand made
pies and tarts

Contact Dave Manning on 01795 421095 or in writing to 28 Sheerstone Iwade Nr Sittingbourne
Kent ME9 8RN



Property Maintenance

COMMERCIAL, DOMESTIC, INDUSTRIAL, ELECTRICAL,
CARPENTRY, FLOORING, PLASTERING, PLUMBING, HEATING,
ALL GENERAL BUILDING WORK, EXTENSIONS &
RENOVATIONS, SPECIALISTS IN REFURB & REFIT - KITCHENS
& BATHROOMS. INSURANCE WORK WELCOME
01634 324422 / 07980 623 103 AFFILIATED TO MEDWAY
FAIR TRADER SCHEME

**The Farm Shop at Featherbed
Farmyard**

Fresh produce and free range eggs
Animals, children's play area and picnic
area. Open Monday to Saturday 9 to 6 and
Sunday 10 to 4. Find us at Featherbed Lane
Iwade Sittingbourne ME9 8RA 01795 478210



**Unisex Hair and Beauty
Salon offering full range
of specialised treatments**

OPEN UNTIL 9PM MONDAY TO WEDNESDAY, 8PM
THURSDAY AND 5PM FRIDAY AND SATURDAY
TELEPHONE 01795 474555
IWADE VILLAGE CENTRE IWADE ME9 8UW

PLANT SALE

Over 1000 plants for sale at wholesale prices.
Stock clearance now on at
Basser Hill Farm | Basser Hill | Iwade. ME9 8GY.
Open Monday to Saturday 10-5 and Sunday 10-
4.
Telephone 07837 050715



NVQ KENT LTD

01795 436471
07896 326 553
Sandra@nvqkent.co.uk
www.nvqkent.co.uk

Training Provider and UK Online Centre member at
5 Alefe Way Iwade Sittingbourne ME9 8TX
Open Monday to Thursday 9am to 5pm and Fridays
9am to 4.30pm. Closed for lunch 12.30-1pm

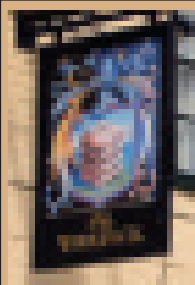
Conservatory Rooms, Windows, Windows, Windows

- ✔ Superb range of fabrics & colours
- ✔ 5 Year Guarantee

For your FREE, no-obligation to-book your
FREE home consultation
Call 0845 682 3771

Thomas Building Services

**Specialist Floor & Wall Tile Fitter local to
Iwade. Experienced in laying Natural Stone,
Slate, Travertine, Limestone, Porcelain and
Ceramic. 20 Years experience. Call Ray on
01795 553903 or 07503 478407 for a free
quotation.**



The Woolpack

17 The Street Iwade ME9 8SH
01795 472656
Restaurant open midday to 9pm
New Chef
New Fish and Chip Takeaway

Dates for the Diary (September 2009)

Gardening Club Thursday **3rd** September 7.30pm call Ann on 599755 for venue

Iwade Farmer's Market Sunday **6th** September 10am til 1pm Iwade Village Hall

Communion Service Sunday **6th** September 11am All Saint's Church Iwade

Sunday Walk and Barbeque Walks, Long and Short, Sunday **6th** September 2pm meet at 29 The Street call Lynda on 476274 to book for the Barbeque

Parish Council Meeting Tuesday **8th** September 7.30pm Iwade Village Hall

Mobile Library Thursday **10th** September 10.40am to 10.55am end of Sheerstone

Sponsored Bike Ride / Walk Day Saturday **12th** September 10am If you would like to ride contact Sylvia on 01795 478103

Family Communion Sunday **13th** September 11am All Saint's Church Iwade

WI Meeting Wednesday 16th September call Hilary Foulds on 474686 for more details

Communion Service Sunday **20th** September 11am All Saint's Church Iwade

Coffee Morning and Good News Van Wednesday **23rd** September 10.15am til 11.30am All Saint's Church Iwade

Mobile Library Thursday **24th** September 10.40am to 10.55am end of Sheerstone

Family Service Sunday **27th** September 10.30am All Saints Church Iwade

Useful Contact Numbers

Swale Borough Council 417850 csc@swale.gov.uk | Kent Highways - 0845 8247800

Crime Reporting line (manned 24/7) 01795 477055

PCSO LindsayWoods 07772 226 188 lindsay.woods@kent.pnn.police.uk | A/PS DarrenWalshaw 07800 675 375 darren.walshaw@kent.pnn.police.uk | Sergeant DanielWorthington 01795 419120

daniel.worthington@kent.pnn.police.uk | NeighbourhoodWatch 01795 419211 | Crime Stoppers 0800 555 111 | Anti-Social Behaviour Team 01795 417575 | Fly Tipping/Graffiti/noise nuisance / Dog control and Abandoned Vehicles 01795 417850

Kent CommunityWarden JuliaWarner 07872 378 220

Gas Emergency 0800 111 999

Kent Healthwatch 08458 247 103

Iwade All Saints Church Contacts Revd Canon Alan Amos 01795 842913 (priest-in-charge) | Revd Jacky Davis 01795 842557 | Mrs Sylvia O'Shea, 01795 478103 (churchwarden) | MariaWilkinson 01795 477133 | Rev DavidWebb 01795 424502

Village Hall Hire call Sue on 01795 475967

Parish Council Parish Clerk Lynda Fisher 01795 477015 Monday to Saturday before 8pm iwadepc@blueyonder.co.uk | Chairman Dave Manning | Vice Chairman DerekWhite

News Contacts Newsletter Editor Nicola McKenzie newsletter@iwadevillage.co.uk 01795 439892 | Tara Kent tarakent@sky.com | Newsletter Distribution Janet Gregory janetgregory117@btinternet.com

News Correspondent for local press Amanda Hurrell 07866 413207 thehurrells@fsmail.net

iwadevillage.co.uk Nicola McKenzie nicola@iwadevillage.co.uk 01795 439892

'Shop front' organisations: Iwade School, 01795 472578 | Iwade Health Centre 01795 413100 |

Bodycare 01795 474555 | Budgens 01795 421854 | Happy Days 01795 424348 | Heaven 01795 435958 |

Ickle Pickles 01795 474551 | Iwade Garage 01795 438988 | Lloyds Pharmacy 01795 439368 | NVQ Kent

Ltd 01795 436471 | Town & Village Homes 01795 422776 | Woolpack 01795 472656

Clubs Cubs and Beavers Village Hall Mondays 6.15 to 8.30 | DartsWoolpack TuesWed and Thurs male

and female | Fishing Club Gordon Dickson 07889 155 315 | Gardening Club Ann 599755 | HealthWalks

Lynda 476274 | Herons Football Club Debbie 439711 | Junior Tygers 07810 204 739 | Lamplighters

WynnWebb 424502 | Model Flying Club 877918 | Musical Theatre Club 07590 375 204 | Nyumon Karate

Do 07709 632 879 | Parent and Toddler Tuesday 9 to 11 Village Hall | Scouts Thursdays 7.15pm Village

Hall skip@1stIwadeScouts.org.uk 431968 | Tinkerbells 07818 833 435 | Weightwatchers Tuesdays 6.45 to

8.15 Iwade School | W.I. Hilary Foulds 474686

Thank you to Atlantic Print Limited Unit 02, Tribune Drive, Trinity Trading Estate, Sittingbourne, ME10 2PG Tel: 01795 420628